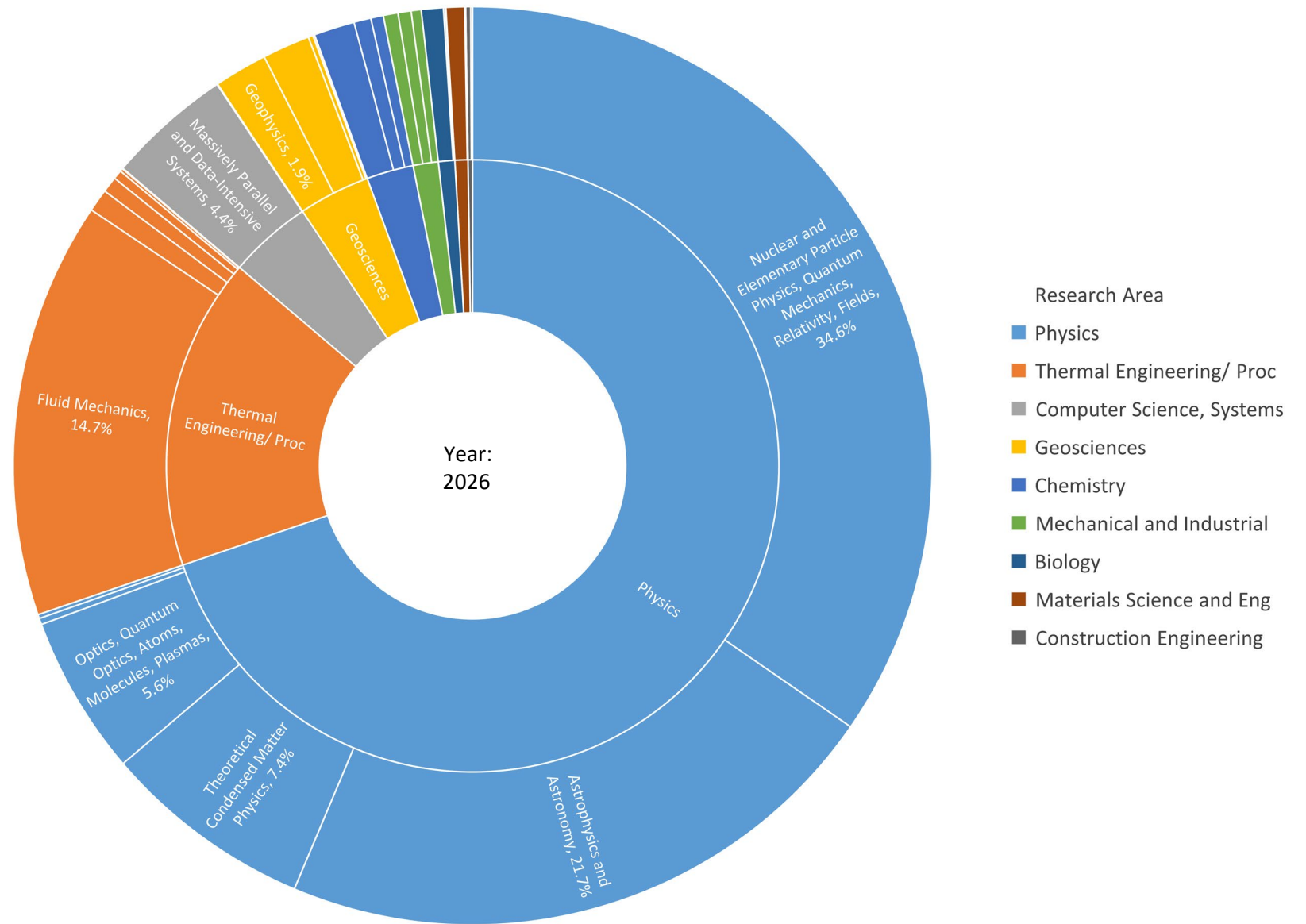


SuperMUC-NG  
Usage Report



## Usage by Month

## SuperMUC-NG Phase1

Date	Mio_MAX	Mio Core-h	%	Jobs
<b>2026</b>	<b>671.8</b>	<b>516.6</b>	<b>77.1%</b>	<b>135383</b>
Jan	231.4	205.7	88.9%	57335
Feb	209.0	175.0	83.7%	33945
Mrz	231.4	135.8	58.7%	44103
<b>2025</b>	<b>2724.7</b>	<b>2358.2</b>	<b>86.6%</b>	<b>1028443</b>
Jan	231.4	193.8	83.8%	56156
Feb	209.0	192.5	92.1%	79831
Mrz	231.4	202.9	87.7%	133101
Apr	223.9	189.7	84.7%	93619
Mai	231.4	199.5	86.2%	51369
Jun	223.9	188.0	84.0%	57488
Jul	231.4	208.7	90.2%	139622
Aug	231.4	217.7	94.1%	89179
Sep	223.9	192.6	86.0%	50711
Okt	231.4	181.3	78.4%	100713
Nov	223.9	184.3	82.3%	109334
Dez	231.4	207.1	89.5%	67320
<b>2024</b>	<b>2732.2</b>	<b>2294.0</b>	<b>83.9%</b>	<b>916935</b>
Jan	231.4	166.8	72.1%	36612
Feb	216.5	162.2	74.9%	34569
Mrz	231.4	191.9	82.9%	21783
Apr	223.9	196.3	87.6%	22219
Mai	231.4	205.9	89.0%	23056
Jun	223.9	195.6	87.3%	35125
Jul	231.4	200.4	86.6%	29727
Aug	231.4	198.1	85.6%	391001
Sep	223.9	166.0	74.1%	111342
Okt	231.4	205.6	88.9%	87895
Nov	223.9	201.0	89.7%	60327
Dez	231.4	204.2	88.2%	63279
<b>2023</b>	<b>2724.7</b>	<b>2306.3</b>	<b>84.7%</b>	<b>486284</b>
<b>2022</b>	<b>2724.7</b>	<b>2239.8</b>	<b>82.1%</b>	<b>463217</b>
<b>2021</b>	<b>2724.7</b>	<b>2308.5</b>	<b>84.6%</b>	<b>684638</b>
<b>2020</b>	<b>2732.2</b>	<b>2104.1</b>	<b>77.0%</b>	<b>659920</b>
<b>2019</b>	<b>1142.1</b>	<b>830.1</b>	<b>72.8%</b>	<b>181474</b>
<b>Total</b>	<b>18177.2</b>	<b>14957.4</b>	<b>82.3%</b>	<b>4556294</b>

Mio\_Max = max of potential usage

= walltime of month \* number of cores

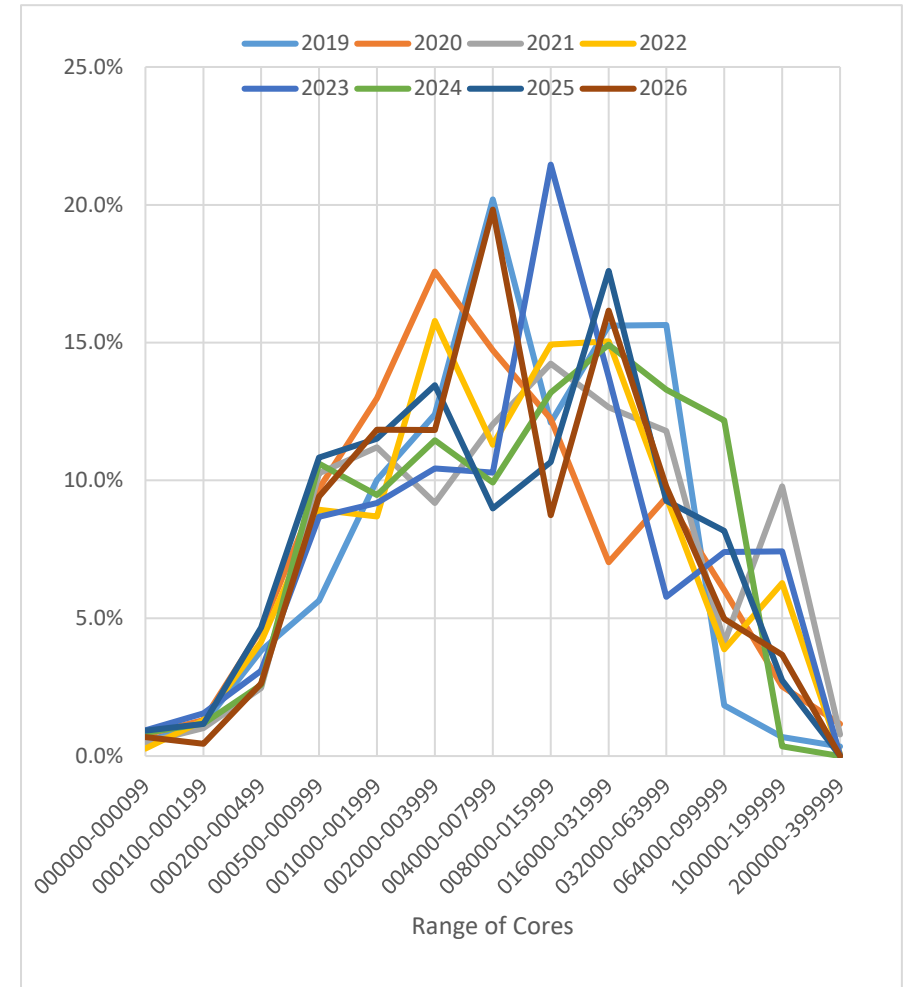
% = utilization = % of Max = Mio Core-h/Mio MAX



## Usage by Jobsite

### Usage (core-h) by Job size

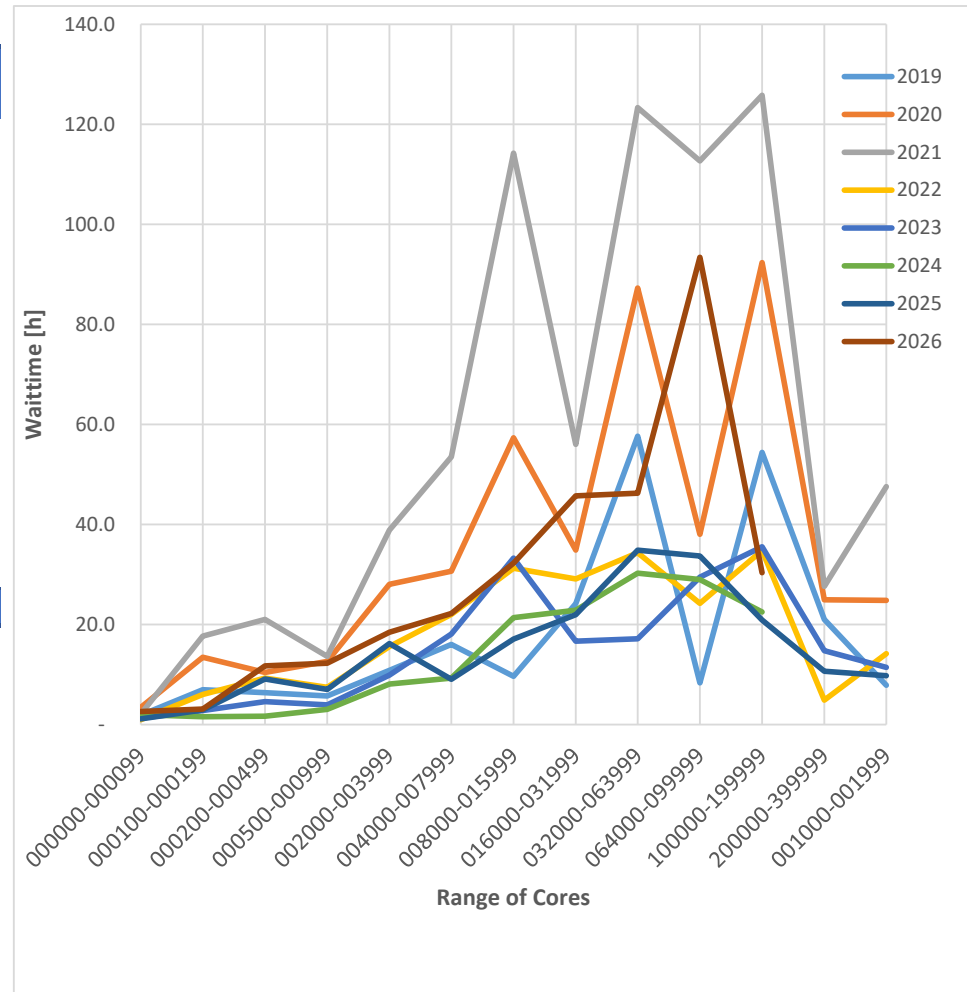
Usage by Job Size									
Range of cores	2019	2020	2021	2022	2023	2024	2025	2026	Total
000000-000099	0.5%	0.8%	0.5%	0.3%	0.9%	0.8%	0.9%	0.7%	0.7%
000100-000199	1.2%	1.3%	1.0%	1.3%	1.5%	1.2%	1.2%	0.4%	1.2%
000200-000499	3.8%	4.6%	2.5%	4.1%	3.1%	2.6%	4.7%	2.6%	3.6%
000500-000999	5.6%	9.7%	10.3%	8.9%	8.7%	10.6%	10.8%	9.4%	9.6%
001000-001999	10.0%	13.0%	11.2%	8.7%	9.2%	9.5%	11.5%	11.8%	10.5%
002000-003999	12.4%	17.6%	9.2%	15.8%	10.4%	11.5%	13.5%	11.8%	12.8%
004000-007999	20.2%	14.7%	12.0%	11.3%	10.3%	9.9%	9.0%	19.8%	11.9%
008000-015999	12.1%	12.2%	14.2%	14.9%	21.5%	13.2%	10.7%	8.7%	14.1%
016000-031999	15.6%	7.0%	12.7%	15.0%	13.8%	14.9%	17.6%	16.2%	13.8%
032000-063999	15.6%	9.4%	11.8%	9.4%	5.8%	13.3%	9.3%	9.8%	10.1%
064000-099999	1.8%	6.0%	4.1%	3.9%	7.4%	12.2%	8.2%	5.0%	6.6%
100000-199999	0.7%	2.5%	9.8%	6.3%	7.4%	0.4%	2.7%	3.7%	4.6%
200000-399999	0.3%	1.2%	0.8%	0.1%	0.0%	0.0%	0.0%	0.0%	0.3%
<b>Total</b>	<b>100.0%</b>	<b>100.0%</b>	<b>100.0%</b>	<b>100.0%</b>	<b>100.0%</b>	<b>100.0%</b>	<b>100.0%</b>	<b>100.0%</b>	<b>100.0%</b>



## Wait time by Jobsite

### Average Wait Time [hours] by Jobsite

Avg. Wait Time [h]									
Jobsite [cores]	2019	2020	2021	2022	2023	2024	2025	2026	Total
000000-000099	1.9	3.4	2.1	1.0	1.3	2.0	1.1	2.6	1.9
000100-000199	7.0	13.5	17.7	6.0	2.8	1.6	2.9	3.1	6.8
000200-000499	6.4	10.4	21.0	9.3	4.6	1.7	9.1	11.7	9.3
000500-000999	5.7	12.7	13.7	7.5	3.9	3.0	7.1	12.3	8.2
002000-003999	10.8	28.1	38.9	15.6	9.9	8.1	16.2	18.5	18.2
004000-007999	16.0	30.7	53.5	22.0	18.1	9.3	9.0	22.2	22.6
008000-015999	9.6	57.3	114.3	31.3	33.3	21.4	17.1	32.3	39.6
016000-031999	24.2	34.9	56.0	29.1	16.6	22.9	22.0	45.7	31.4
032000-063999	57.7	87.3	123.4	34.3	17.1	30.3	34.9	46.3	53.9
064000-099999	8.3	38.0	112.7	24.2	29.5	29.0	33.7	93.4	46.1
100000-199999	54.4	92.4	125.8	34.8	35.5	22.5	20.9	30.4	52.1
200000-399999	21.0	24.9	27.6	4.9	14.8		10.6		17.3
001000-001999	7.8	24.8	47.6	14.2	11.5	3.4	9.8	14.9	16.7
<b>Total</b>	<b>17.8</b>	<b>35.3</b>	<b>58.0</b>	<b>18.0</b>	<b>15.3</b>	<b>12.9</b>	<b>15.0</b>	<b>27.8</b>	<b>25.1</b>

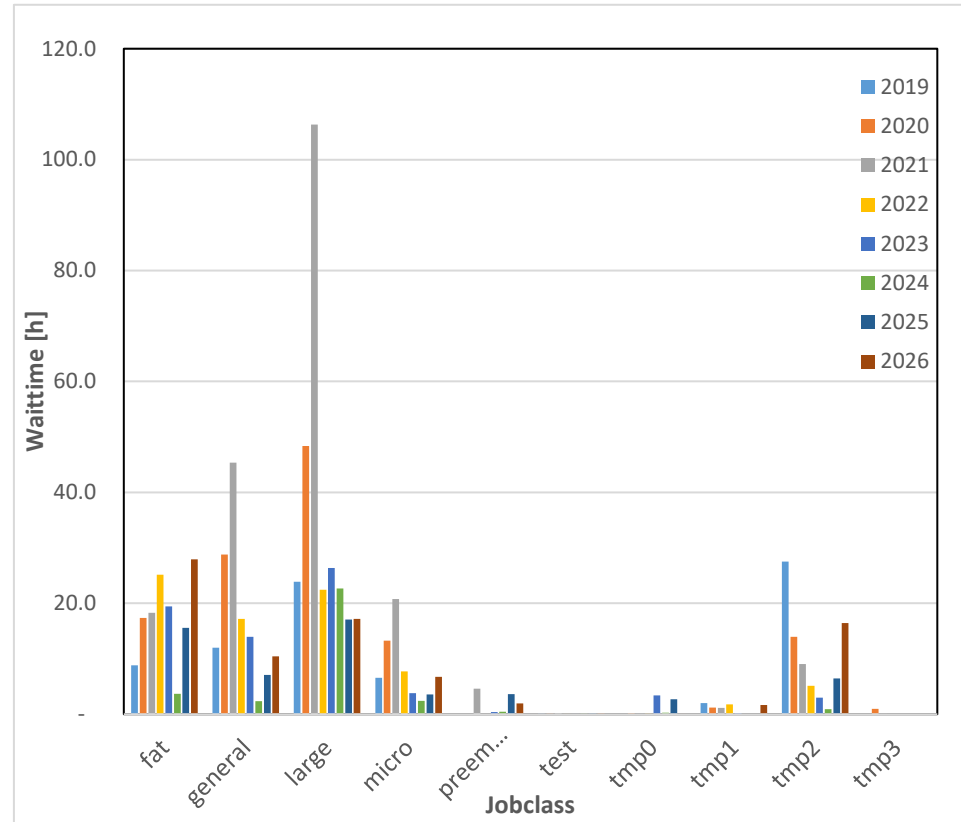




## Waittime by Job Class

**Average Wait Time [hours] by Jobclass**

Avg Wait_h	2019	2020	2021	2022	2023	2024	2025	2026	Total
fat	8.8	17.3	18.3	25.1	19.4	3.7	15.6	27.9	17.0
general	12.0	28.8	45.3	17.2	14.0	2.4	7.1	10.4	14.3
large	23.9	48.4	106.3	22.4	26.3	22.7	17.1	17.2	31.0
micro	6.6	13.3	20.8	7.7	3.8	2.4	3.5	6.8	8.1
preempt	na	na	4.6	na	0.4	0.5	3.6	1.9	2.4
test	0.1	0.1	0.1	0.0	0.0	0.1	0.2	0.2	0.1
tmp0	na	0.2	0.0	0.1	3.4	0.3	2.7	0.0	1.1
tmp1	2.0	1.2	1.2	1.8	0.2	na	na	1.7	1.3
tmp2	27.5	14.0	9.1	5.1	3.0	0.9	6.4	16.5	9.7
tmp3	na	1.0	0.0	na	na	na	na	na	0.5
<b>Total</b>	<b>11.5</b>	<b>13.8</b>	<b>20.6</b>	<b>9.9</b>	<b>7.8</b>	<b>4.5</b>	<b>6.7</b>	<b>9.8</b>	<b>10.1</b>



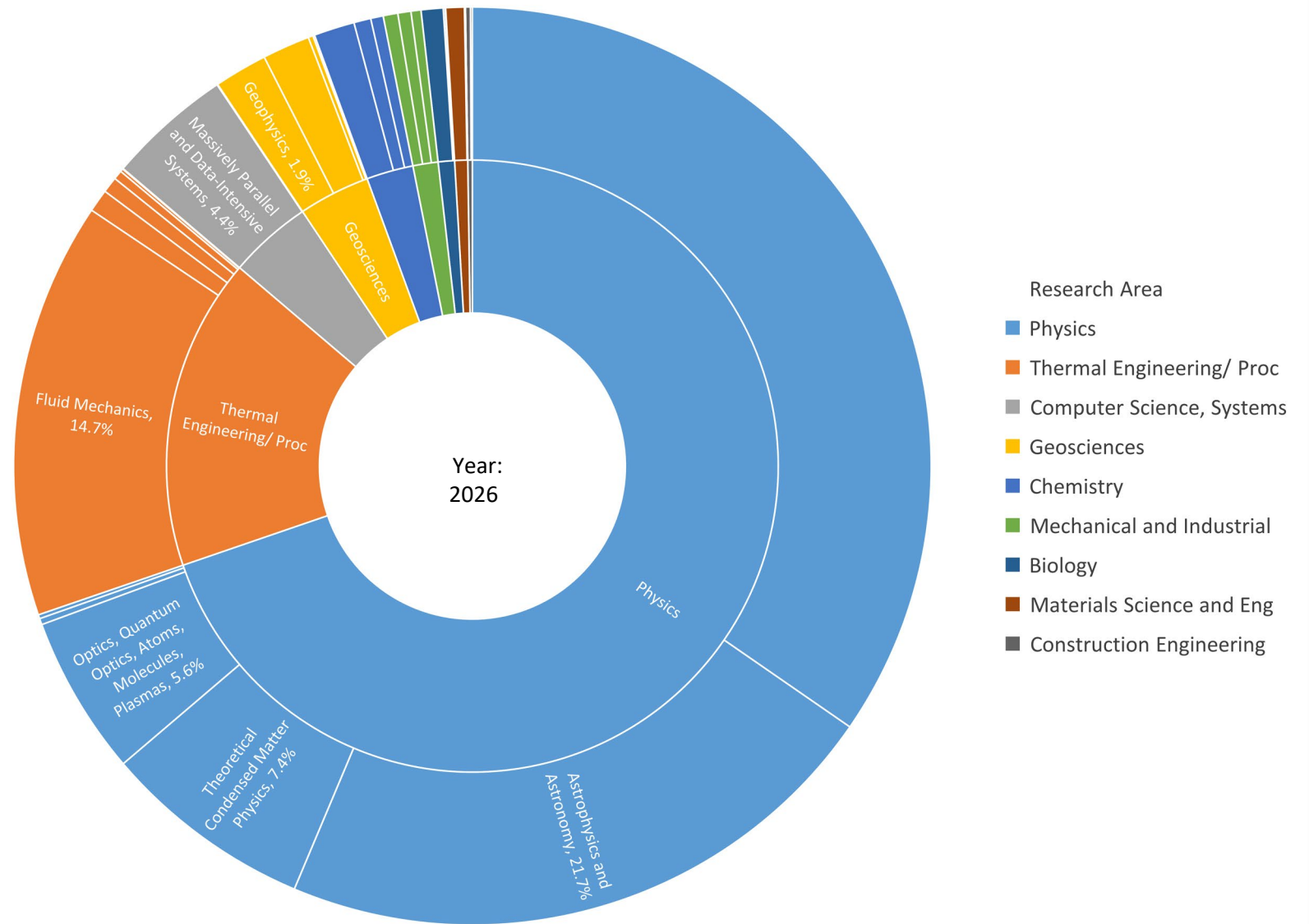






# Usage by Research Area

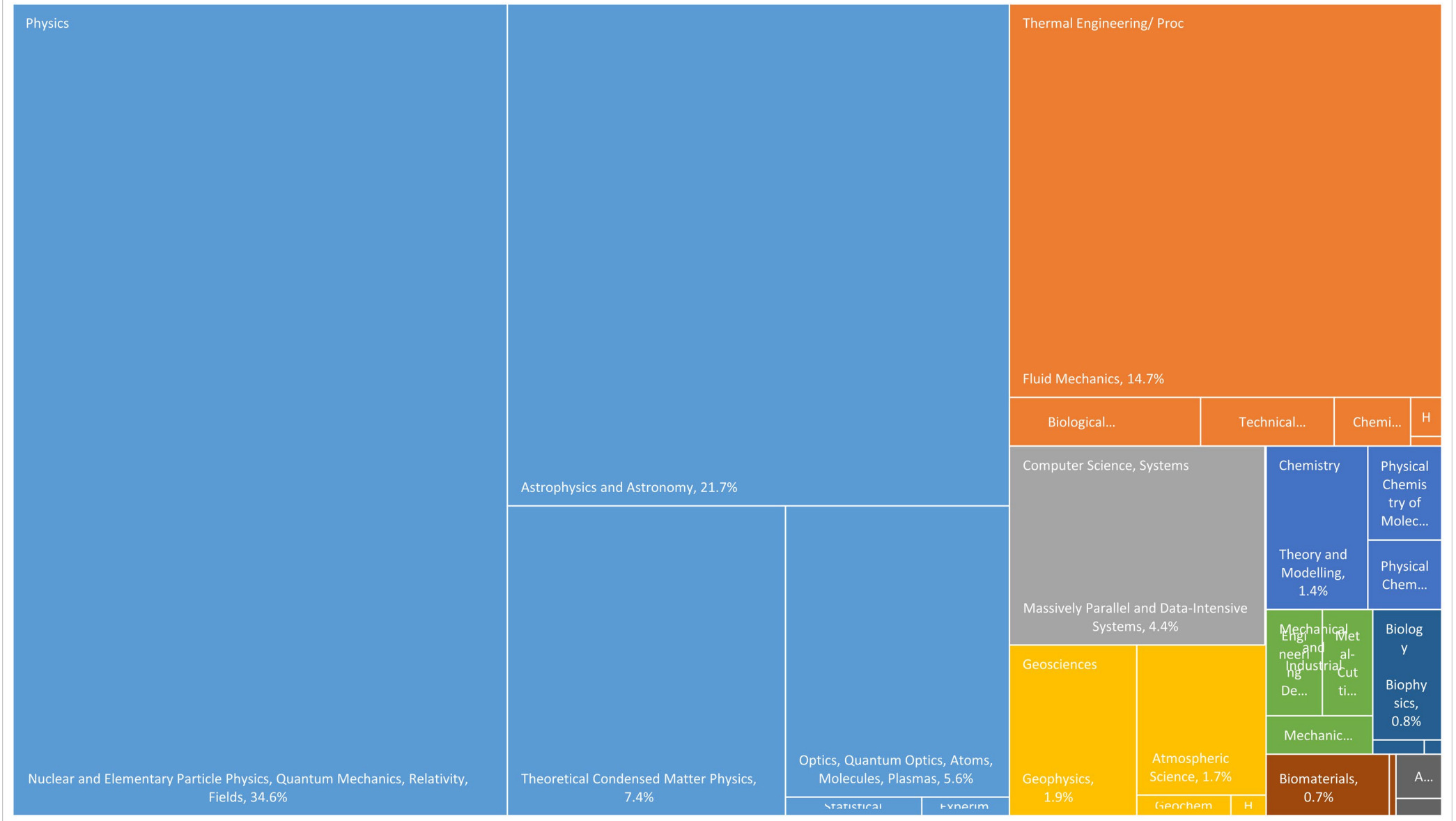
## Usage by Research Area (DFG Level 2 and 3)



# Usage by Research Area

## Usage by Research Area (DFG Level 2 and 3)

Year: 2026



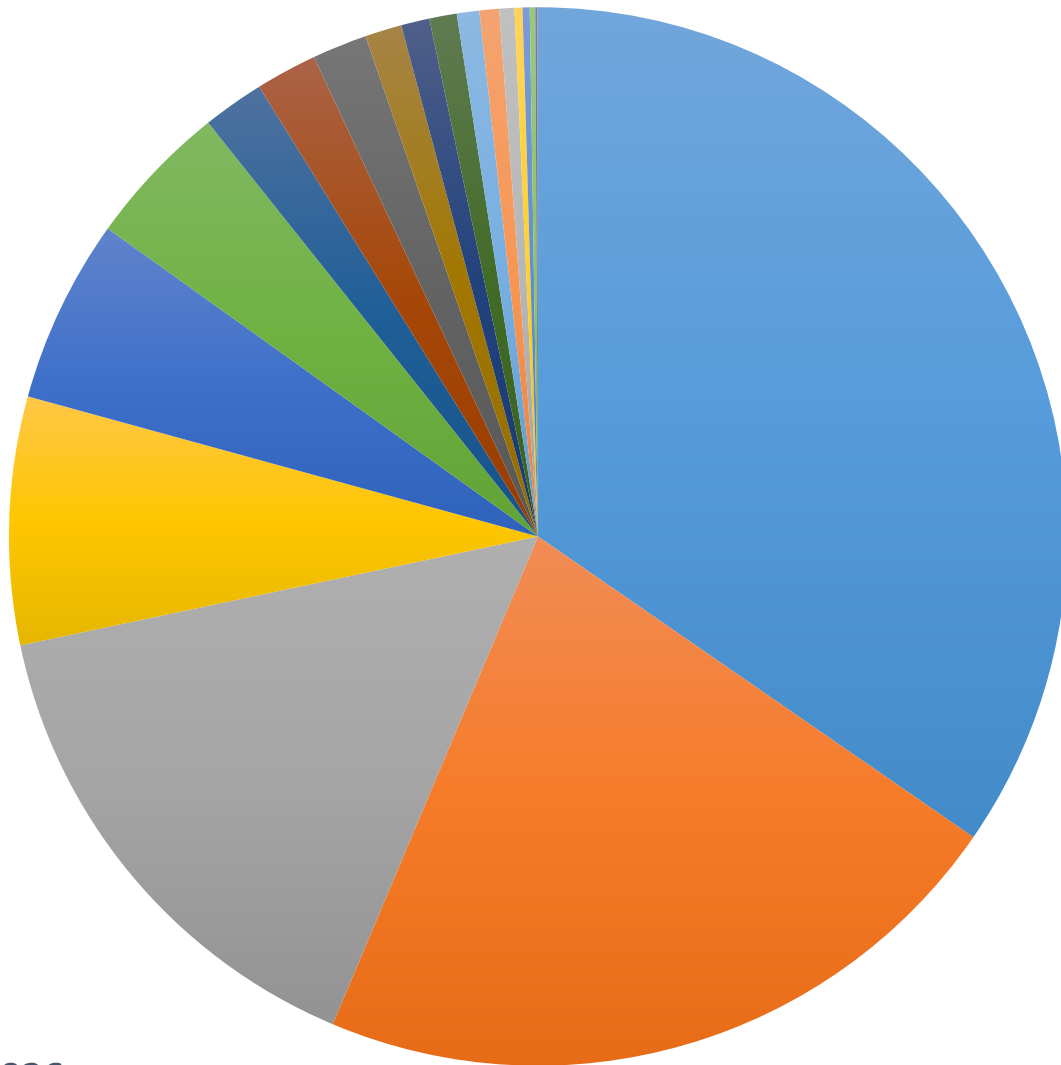




Usage

DFG\_TOPIC\_LVL3\_DESC

- Particles, Nuclei and Fields
- Astrophysics and Astronomy
- Heat Energy Technology, Thermal Machines, Fluid Mechanics
- Condensed Matter Physics
- Optics, Quantum Optics and Physics of Atoms, Molecules and Plasmas
- Computer Science
- Chemical Solid State and Surface Research
- Geophysics and Geodesy
- Atmospheric Science, Oceanography and Climate Research
- Process Engineering, Technical Chemistry
- Mechanics and Constructive Mechanical Engineering
- Basic Biological and Medical Research
- Materials Science
- Physical Chemistry
- Production Technology
- Construction Engineering and Architecture



2026

Year

