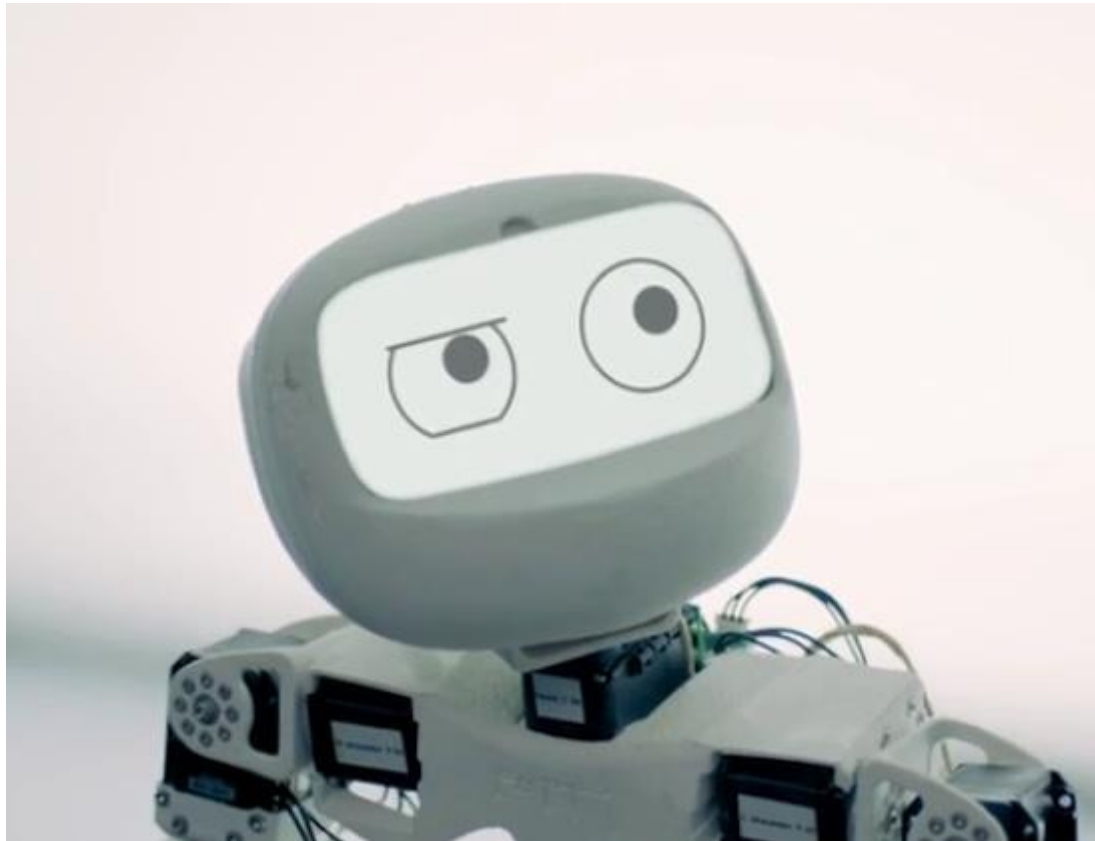




# INGENIEURSPRAXIS: POPPY FACIAL EXPRESSIONS

Betreuer: Stefan Röhrl, M.Sc.

# POPPY IN DER WEB-SERIE TECHNICALLY SINGLE





# COZMO<sup>®</sup>



Neutral



Blink (high)



Happy



Glee



Blink (low)



Sad (looking down)



Sad (looking up to user)



Worried



Focused/Determined



Annoyed



Surprised



Skeptic



Frustrated/Bored



Unimpressed



Sleepy Eyes



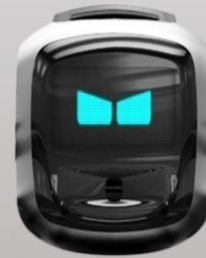
Suspicious



Squint



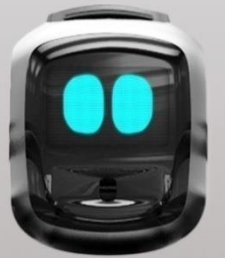
Angry



Furious

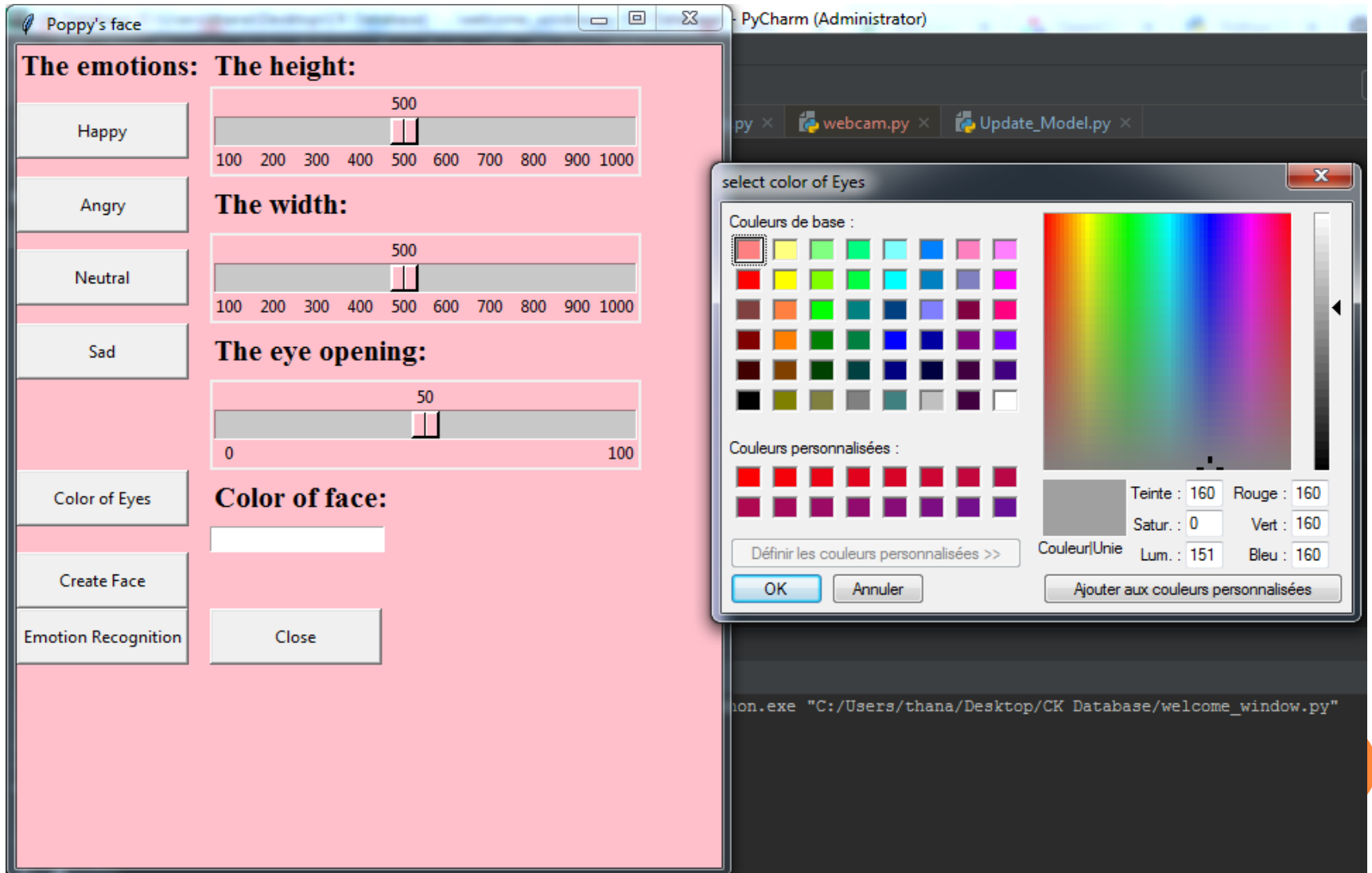


Scared

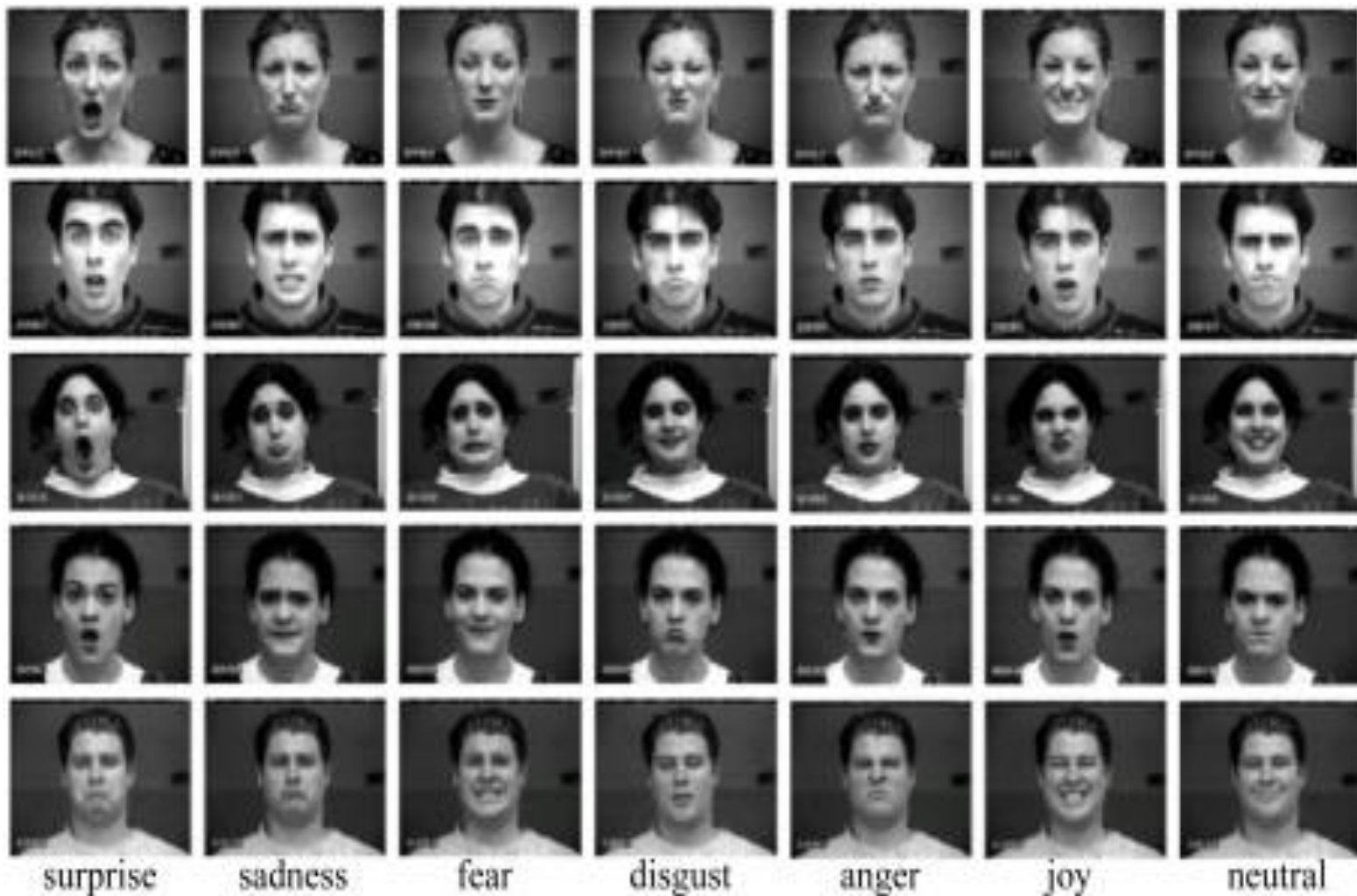


Awe

# WELCOME WINDOW



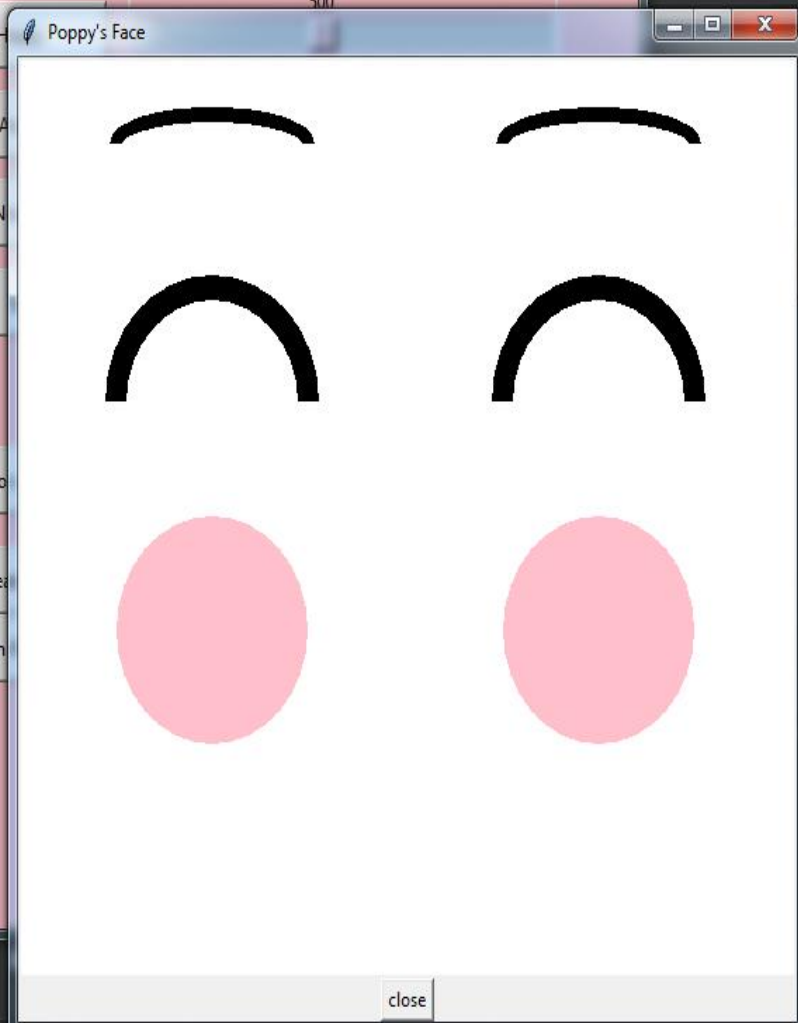
# COHN-KANADE DATASET



Poppy's face

PyCharm (Administrator)

The emotions: The height: 500

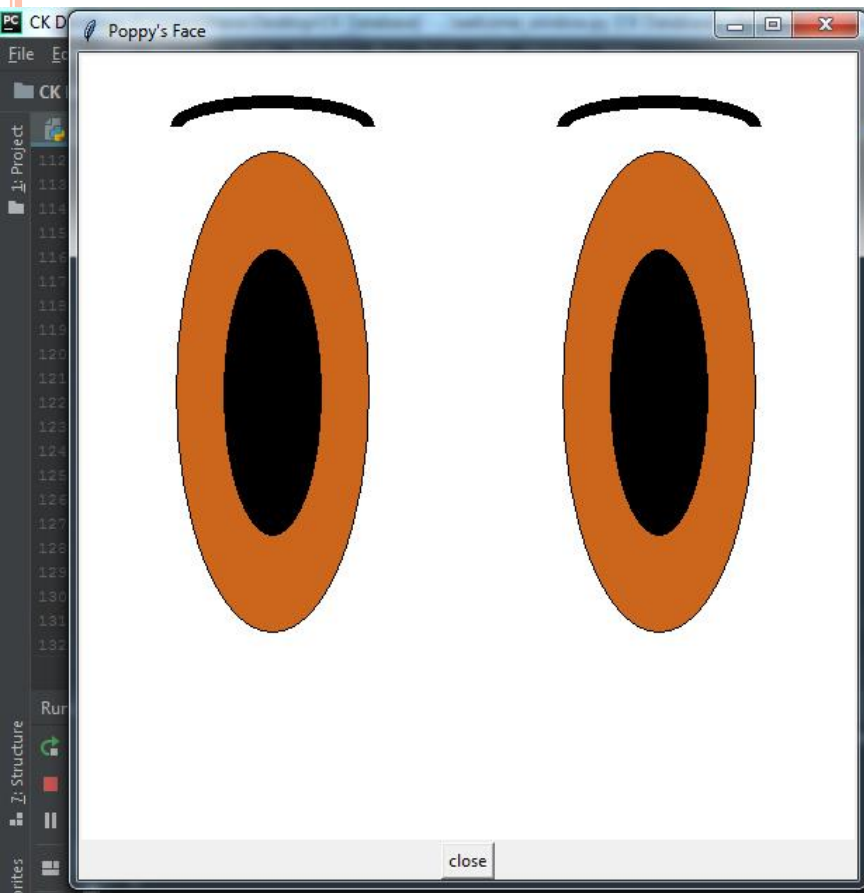


welcome\_window



Run | TODO | Version Control | Terminal | Python Console | No R interpreter defined: Many R related features like completion, code checking and help won't be available. You can set an interpreter under Preferences->Languages->R (3 minutes ago) | 131:64 CRLF + UTF-8 + Git: master +

Windows taskbar showing icons for Start, File Explorer, Firefox, WhatsApp, Chrome, Spotify, another Chrome instance, OneDrive, PC, and a game controller icon. System tray on the right shows "FR", network, volume, and power icons, along with the date and time "12:47 16/10/2018".



Run | TODO | Version Control | Terminal | Python Console | Event Log

No R interpreter defined: Many R related features like completion, code checking and help won't be available. You can set an interpreter under Preferences->Languages->R (3 minutes ago) | 131:64 | CRLF | UTF-8 | Git: master

FR | 12:46 | 16/10/2018

The bottom of the image shows a Windows taskbar with various application icons including File Explorer, Firefox, WhatsApp, Chrome, Spotify, and the PC icon. The system tray on the right includes network, volume, and power icons.