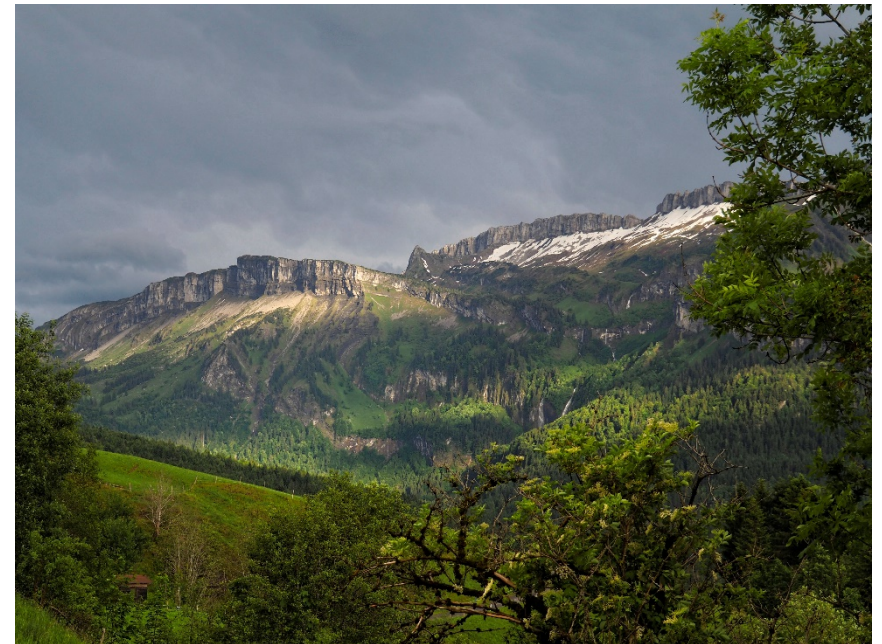
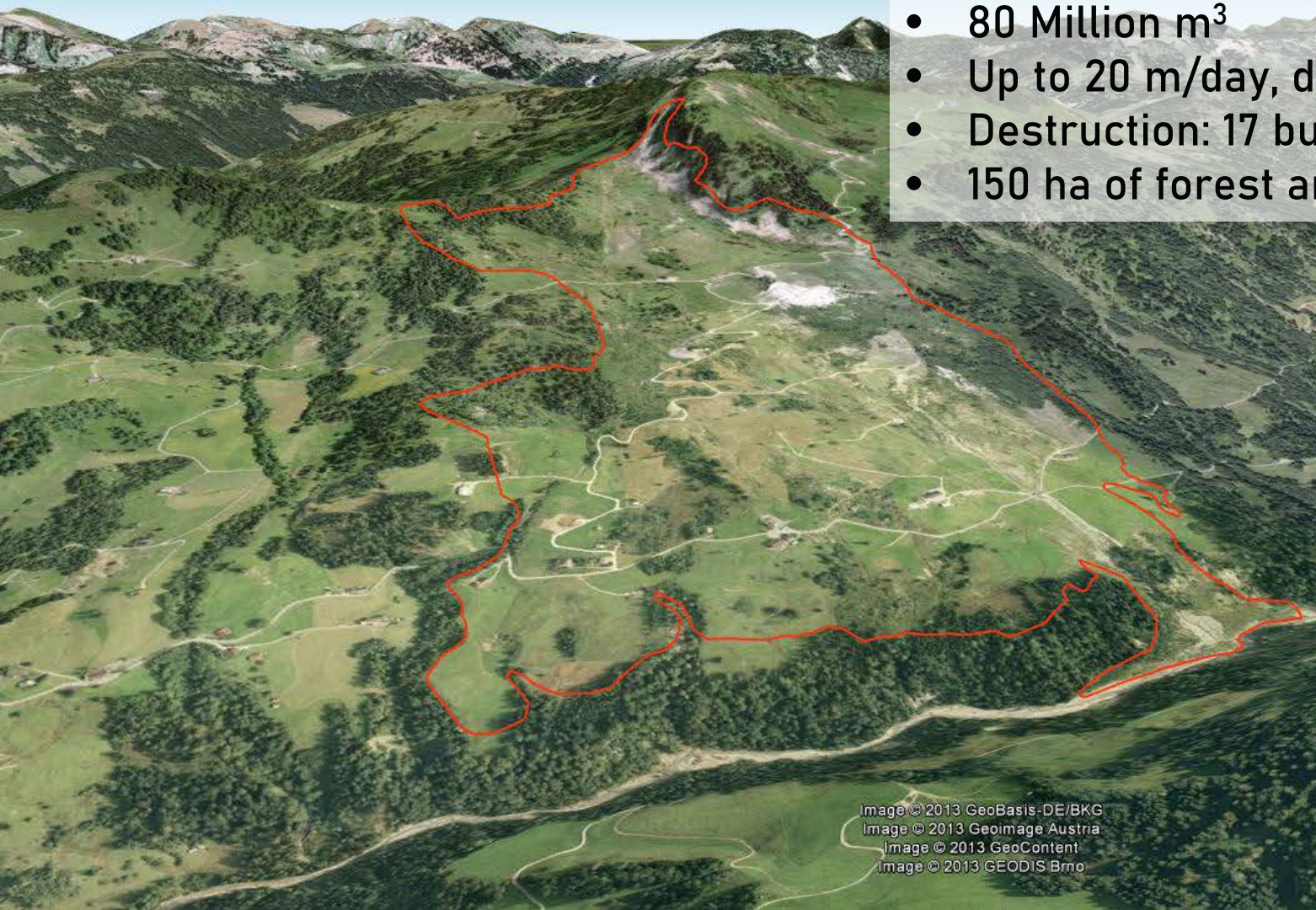


Field Mapping Course „Kartierungsübung Rindberg“

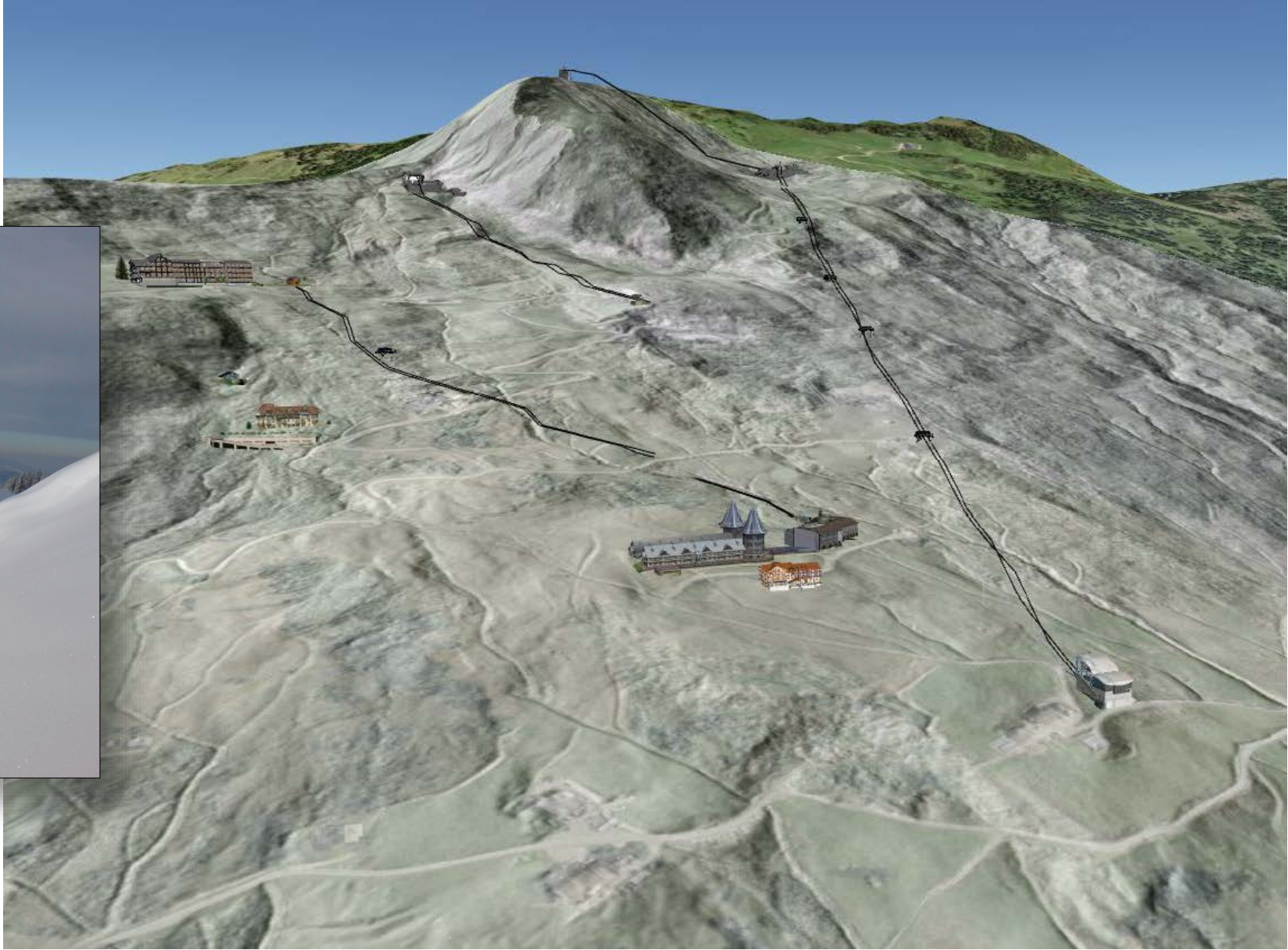


Rindberg Massive Landslide 1999

- Snow melt and massive rainfalls: 521 mm in May
- Complex mass movement
- 80 Million m³
- Up to 20 m/day, depth up to 70 m
- Destruction: 17 buildings, moved up to 240 m
- 150 ha of forest and grassland destroyed

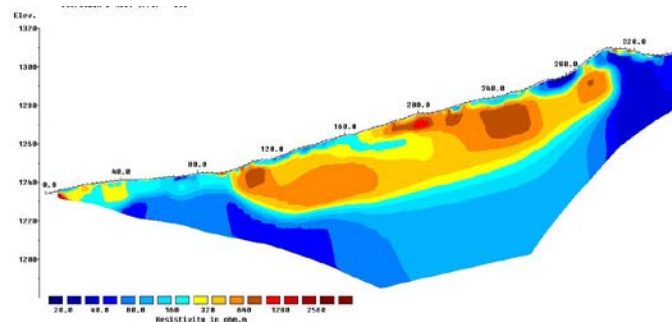


Potential Ski area?



What can you expect? Rindberg

- Intro into geological and geomorphological mapping
 - Engineering geology: soil and rock description
 - How to distinguish different types of Landslides in the field
 - How to identify hazards for civil construction
 - Field Methods: Electrical Resistivity Tomography/ Terrestrial Laser Scanning
- Recognition, investigation & mitigation measures of landslide hazards
- Results can be used in GIS Course
- Monday: Overview and Excursion, Tuesday-Friday Mapping
- max. 200 Euro including food

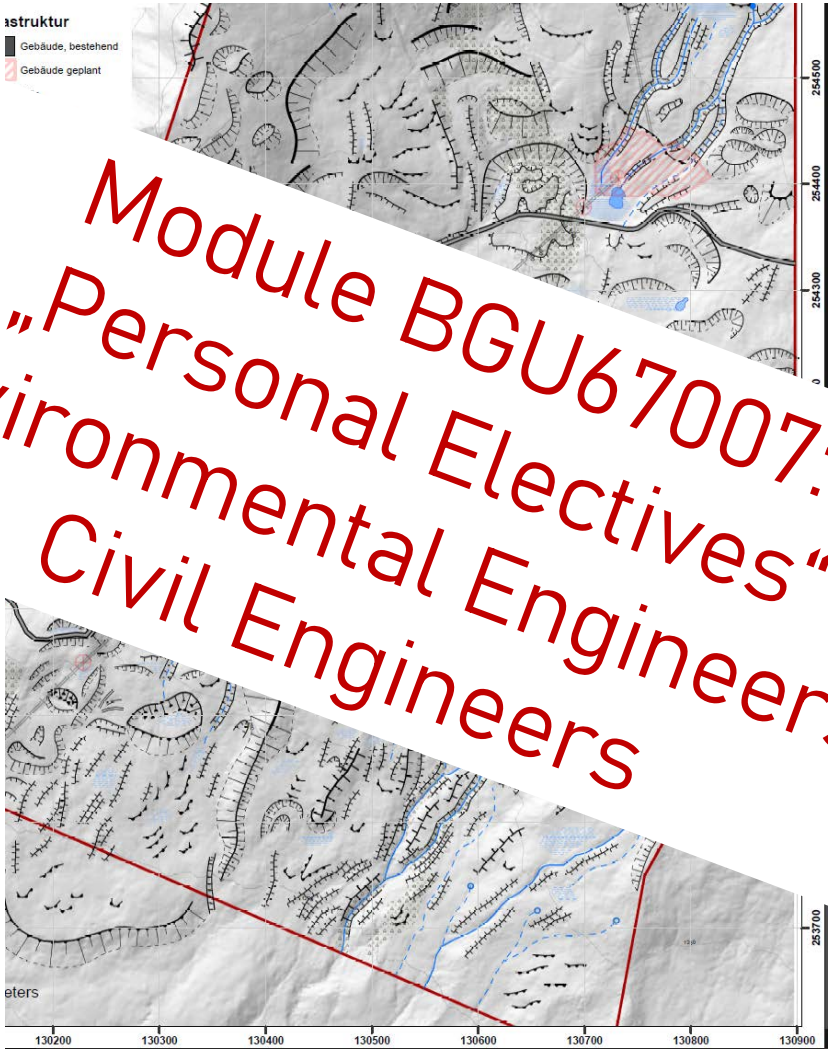


Outcome:

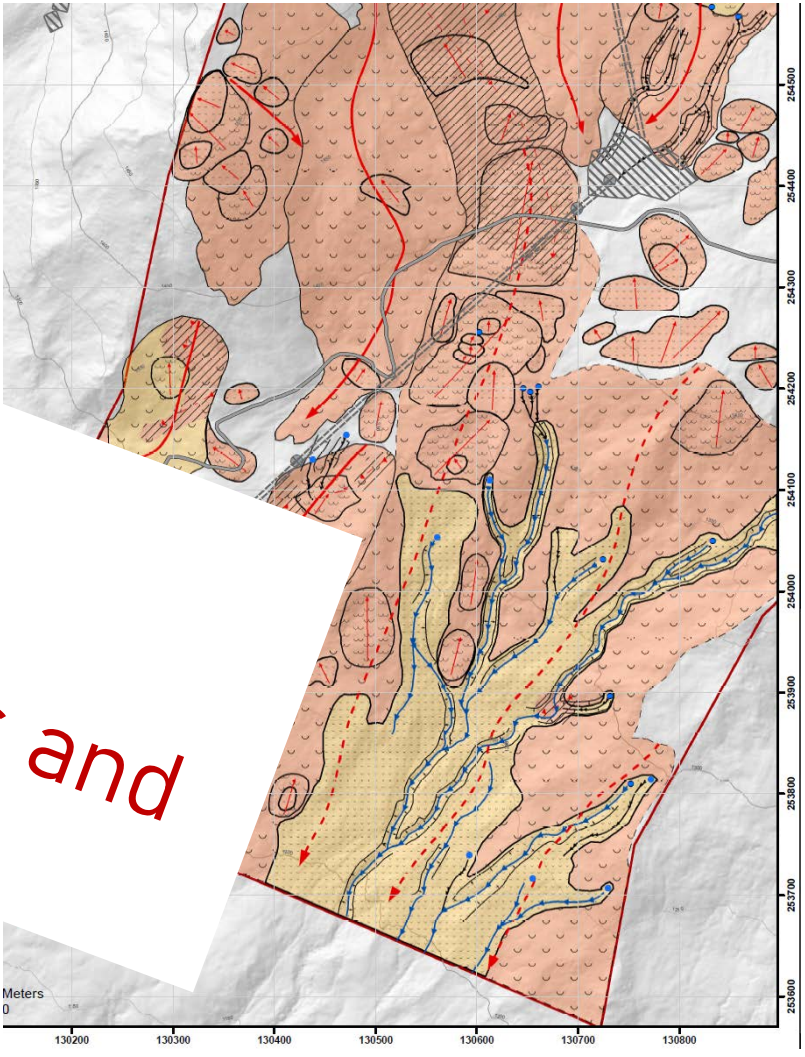
Geology



Morphology

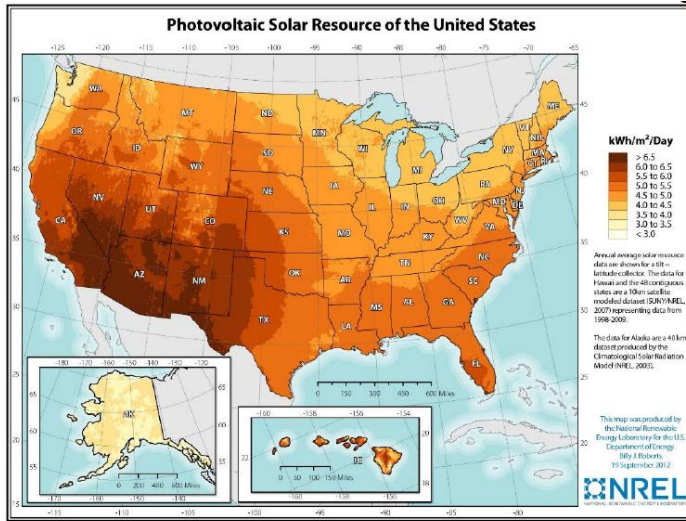


Processes



Module BGU67007:
"Personal Electives"
for Environmental Engineers and
Civil Engineers

What can you expect? GIS Course



ArcGIS Pro

