

# Going abroad with ERASMUS+ / SEMP

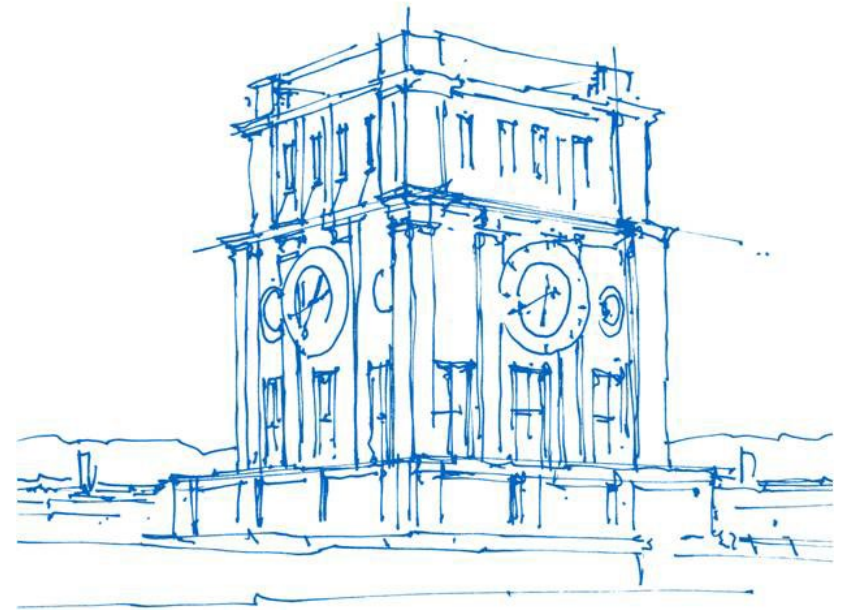
Nadin Klomke

Technische Universität München

TUM School of Engineering and Design

Civil / Environmental / Geo Engineering

München, 25. November 2025



*Uhrenturm der TUM*

# Schedule

- ❖ ERASMUS+ SMS – Study stays
- ❖ Swiss European Mobility Program – Study stays
- ❖ Experience reports from student
- ❖ ERASMUS+ SMP – Internship
- ❖ Swiss European Mobility Program - Internship
- ❖ Double Degree Programme
- ❖ Departmental Programs
- ❖ Your queries

# ERASMUS+ – Erasmus+ Study Stays and Internships

## Study stays and Internships in Erasmus+ program countries

- Study stays (ERASMUS+ SMS)
- Internships in companies and universities (ERASMUS+ SMP)
- Final thesis (SMS or SMP)
  
- Participating countries: EU member states plus Iceland, Liechtenstein, Macedonia, Norway and Turkey
  
- Switzerland is not involved: Swiss European Mobility Programm (SEMP)
  
- More than 350 Partner universities in 28 European countries at TUM
  
- Most popular countries: Spain, Scandinavian countries



Bild: <http://erasmus-plus.ro/>

# ERASMUS+ SMS /SEMP

**ERASMUS+ Study stays (SMS)**  
**Swiss European Mobility Program (SEMP)**



Bild: Stefanie Dietz / TUM

# ERASMUS+ SMS - Benefits

- Period: 60-360 days in each study cycle (Bachelor, Master)
- Tuition fees waived at the partner university
- Financial support: amount depends on region, duration of stay and yearly budget of TUM
- Special needs grant „top up“ for students with fewer opportunities: monthly subsidy amount additionally to the grant amount
- Green Travel Grant: additional travel days for climate-friendly travel
- Support with linguistic and cultural preparation for a stay abroad (TUM Erasmus office and TUM language center)
- Support with academic preparation for a stay abroad (TUM ED)
- Academic recognition of credits is possible
- Support from the host institution regarding accommodation, orientation days etc.

# ERASMUS+ SMS+ - Erasmus grant

- is linked to the Erasmus application
- Compensation for additional costs incurred abroad (no full scholarship)
- Passing at least 10 ECTS per semester for Erasmus grant
- Proof of at least 60 days stay at the partner university abroad
- Payment of the Erasmus+ grant in two installments
- Further details are regulated in the Grant Agreement
- Information on funding rates: [Website DAAD](#)

# Scholarships for studies in Switzerland

- Scholarships for TUM students are taken over by Swiss universities
- Information on how to apply for the scholarship can be obtained from the TUM Global & Alumni Office after a place has been confirmed.

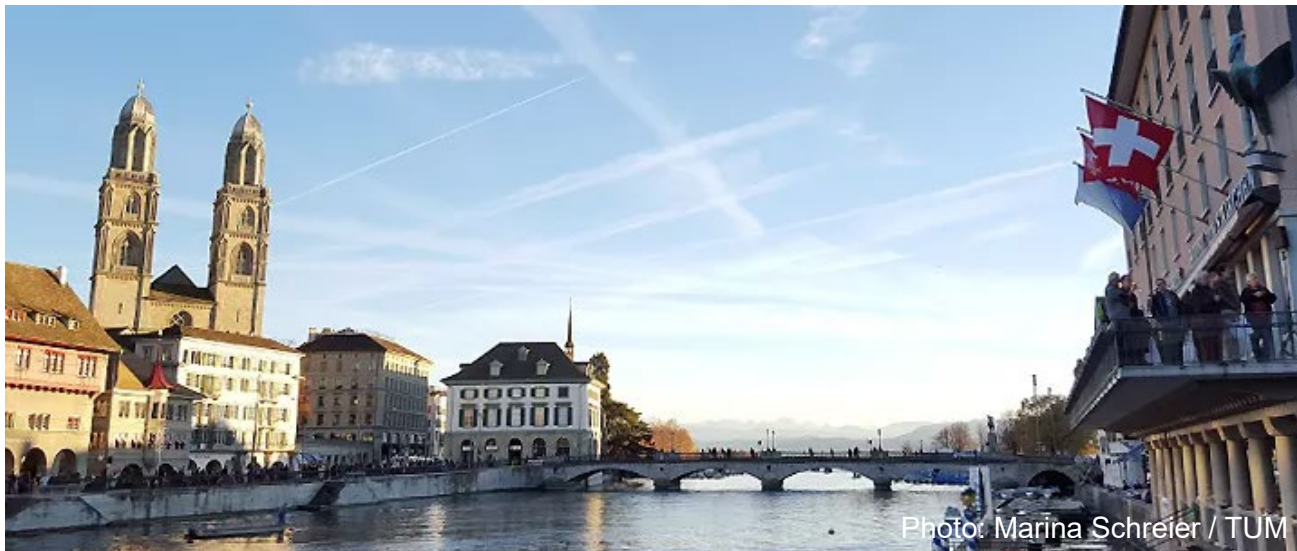


Photo: Marina Schreier / TUM

# ERASMUS+ SMS / SEMP - Requirements

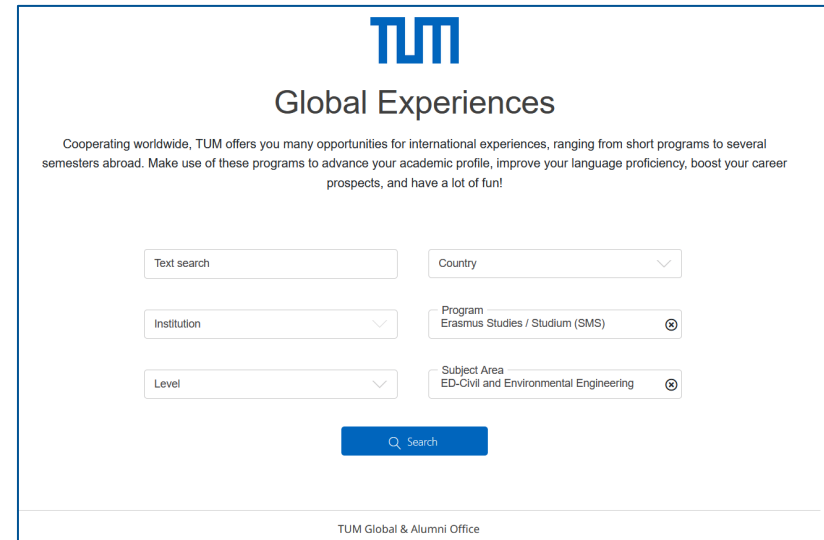
- Enrollment at TUM before, during and after stay abroad
- Successful completion of at least the first year of study (starting from Bachelor's study)
- Sufficient knowledge of the language of the courses at host university
- Good academic performance

# ERASMUS+ SMS / SEMP – Exchange opportunities

- TUM ED CEE/GEE: around 160 places at more than 50 partner universities
- Agreements finalised for subject area Civil / Environmental / Geo Engineering (CEGE)  
Students have to choose from the course offer of the partner *department / School*
- Selection of partner universities according to study-relevant criteria (course offer, relevance of course offer for degree, semester period) and existing knowledge of the lecture language
- Overview of partner universities in data base:  
<https://tum.adv-pub.moveon4.de/global-experiences/>
- Overview of partner universities in Erasmus brochure:  
<https://collab.dvb.bayern/x/JKBKB>

# Exchange opportunities – Data base

- Filter by:
  - **Program:** Erasmus Studies or Swiss European Mobility Program Studies
  - **Subject Area:** currently still *ED-Civil and Environmental Engineering*; *ED-Geology* ; coming soon *ED- Civil / Environmental / Geo Engineering*
  - **Country:** Destinations of choice



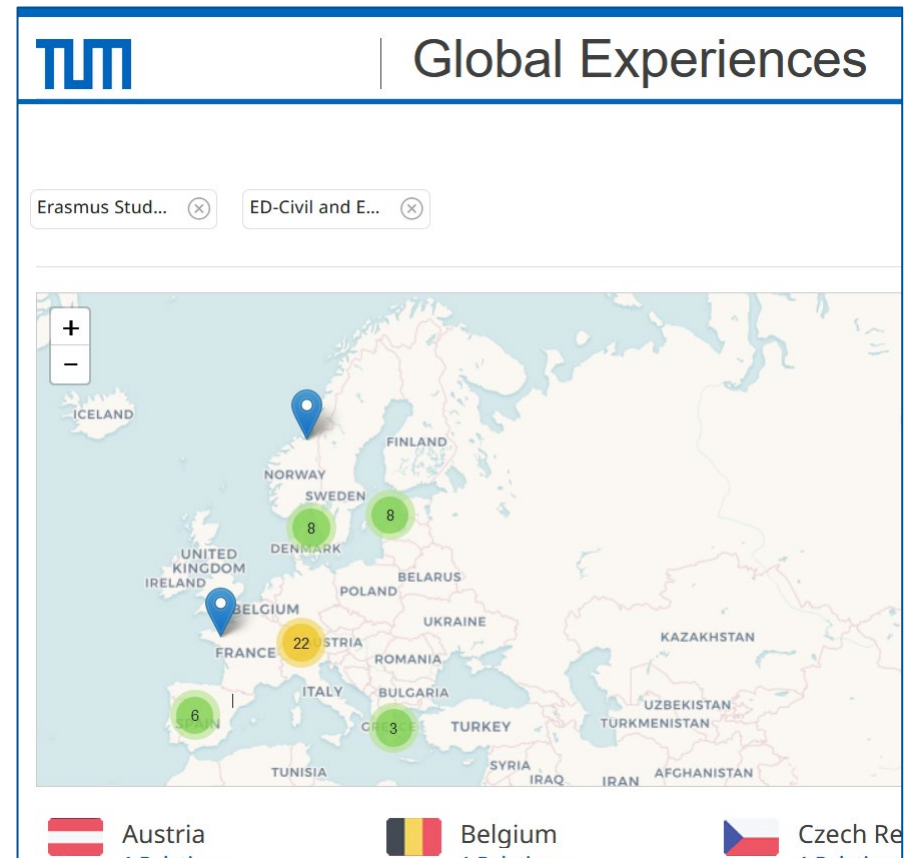
The screenshot shows the TUM Global Experiences search page. At the top, the TUM logo is displayed above the heading "Global Experiences". Below the heading is a short introductory paragraph. The main section contains a search form with the following fields:

- Text search:** A text input field.
- Country:** A dropdown menu.
- Institution:** A dropdown menu.
- Program:** A dropdown menu with "Erasmus Studies / Studium (SMS)" selected.
- Level:** A dropdown menu.
- Subject Area:** A dropdown menu with "ED-Civil and Environmental Engineering" selected.

A blue "Search" button is located below the form fields. At the bottom of the page, the text "TUM Global & Alumni Office" is visible.

# Partner universities – Data base

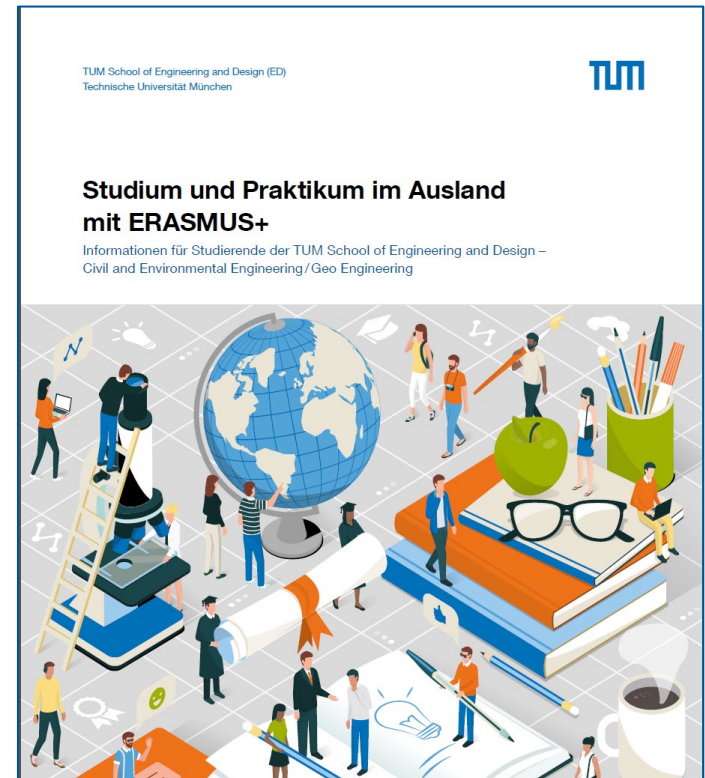
- Overview of all current partner universities
- Contains short overview of exchange possibility and section „Travel reports“
- Check data base for current exchange opportunities



- *Currently: Erasmus agreement with University College Dublin is suspended in 2026/27*

# Exchange opportunities - Booklet

- Overview of partner universities of TUM ED – CEGE
- Contains information on:
  - Suitable fields of study and study level
  - Number of places and max. duration of study
  - Language of instruction and required language skills
  - Semester dates and application deadlines
  - Course offerings, course catalogue and professional requirements



# Exchange opportunities – Booklet

## Partneruniversitäten auf einen Blick

### Belgien Leuven



[1]

#### KU Leuven

<https://www.kuleuven.be/english/admissions/exchange>

Studiengang	Bau
Plätze	1 (je max. 10 Monate)
Austauschlevel	Bachelor, Master (mindestens 3 Studienjahre absolviert)
Semesterdaten	September – Februar Februar – Juli
Bewerbungsfristen	Ende April für 1. Semester Anfang Oktober für 2. Semester
Unterrichtssprache	Englisch, Niederländisch
Sprachkenntnisse	B2 Englisch oder Niederländisch

#### Fachliche Informationen:

- Wahl von Kursen im Umfang von maximal 30 ECTS wird empfohlen
- Mehrzahl der gewählten Kurse muss von der „Faculty of Engineering Science“ sein
- maximal 2 Kurse können von anderer Fakultät gewählt werden
- es können Kurse von verschiedenen Masterprogrammen kombiniert werden
- Kursliste: <https://eng.kuleuven.be/en/study/prospective-students/non-degree-seeking-students>

### Dänemark Lyngby



[2]

#### Danmarks Tekniske Universitet

<http://www.dtu.dk/english/education/incoming-students>

Studiengang	Umwelt, Bau
Plätze	12 (je max. 10 Monate)
Austauschlevel	Bachelor, Master
Semesterdaten	August – Dezember Januar – Mai
Bewerbungsfristen	Mitte April für 1. Semester Anfang November für 2. Semester
Unterrichtssprache	Englisch
Sprachkenntnisse	B2 Englisch

#### Fachliche Informationen:

- Austauschstudierende können aus dem gesamten Kursangebot in englischer Sprache wählen
- Bachelorstudierende können Masterkurse wählen, sofern sie die fachlichen Voraussetzungen der jeweiligen Kurse erfüllen
- empfohlenes Arbeitspensum beträgt 25-30 ECTS (maximal 35 ECTS, entspricht 7 x 5 credits courses) pro Semester
- Kurskatalog: <http://kurser.dtu.dk/search>

## Partneruniversitäten auf einen Blick

### Estland Tallinn



[3]

#### Tallinna Tehnikaülikool

<https://www.ttu.ee/studying/exchange-studies/exchange-studies-incomingoutgoing/>

Studiengang	Umwelt
Plätze	4 (je max. 5 Monate)
Austauschlevel	Master
Semesterdaten	September – Januar Februar – Juni
Bewerbungsfristen	Mitte Mai für 1. Semester Mitte November für 2. Semester
Unterrichtssprache	Englisch
Sprachkenntnisse	B2 Englisch

#### Fachliche Informationen:

- mindestens 70 % der gewählten Kurse müssen Studienniveau und Studiengang an Heimatuniversität entsprechen
- gefordertes Arbeitspensum beträgt min. 15 ECTS pro Semester
- Kursübersicht: <https://www.ttu.ee/studying/exchange-studies/exchange-studies-incomingoutgoing/before-studies/courses-in-english/>

### Finnland Espoo/Helsinki



[4]

#### Aalto-yliopisto

<https://into.aalto.fi/display/enuudet/Incoming+exchange+students>

Studiengang	Bau
Plätze	3 (je max. 10 Monate)
Austauschlevel	Master (Bachelorstudierende erlaubt, wenn sie mindestens 2 Studienjahre absolviert haben)
Semesterdaten	August – Dezember Januar – Juni
Bewerbungsfristen	Ende April für 1. Semester Mitte Oktober für 2. Semester
Unterrichtssprache	Englisch
Sprachkenntnisse	B2 Englisch

#### Fachliche Informationen:

- mindestens 2/3 der gewählten Kurse müssen vom selben Studiengbiet an der „School of Engineering“ sein
- gefordertes Arbeitspensum beträgt 30 ECTS pro Semester
- Kursbeschreibungen sind verfügbar unter: <https://mycourses.aalto.fi/>
- Kursliste: <https://into.aalto.fi/display/enuudet/School+of+Engineering>

# ERASMUS / SEMP - Application process

- Application deadline: Mid-January e. y. for the following entire academic year (incl. summer semester)
  - **Next round of applications: 1. Dez. 2025 – 13. Jan. 2026 (12:00h)**
- 1<sup>st</sup> Step:                    Application at TUM ED – CEGE  
                                   (application documents in German or Englisch)  
                                   <https://collab.dvb.bayern/x/K6BKB>
- 2<sup>nd</sup> Step:                    Selection by ALB at TUM ED – CEGE  
                                   (Selection based on academic performance, motivation, language skills)
- 3<sup>rd</sup> Step:                    Official nomination at partner university (ALB)
- 4<sup>th</sup> Step:                    Application at partner university (ST)  
                                   (application documents in Englisch or language of instruction)
- 5<sup>th</sup> Step:                    Acceptance/Rejection by the partner university
- 6<sup>th</sup> Step:                    Submission of the scholarship documents to the TUM G&A

# ERASMUS / SEMP - Application documents

- Register at application portal MoveOn – Remember login data!
- Fill online application form
- Up to **4** optional universities possible
- Upload the following documents:
  - Current grade report of all previous achievements since Bachelor's degree
  - Preliminary Study Programme (for each selected university)
  - CV
  - Motivation letter (only one, related to the first choice)
  - Proof of language skills (e.g. language certificate, language test)
- Upload complete documents to the portal on time
- Information on the application: <https://collab.dvb.bayern/x/K6BKB>



# ERASMUS / SEMP - Recognition of credits

- Credits earned at the host university can be recognized for your degree at TUM
- Prior to the stay abroad, clarification of the possible recognition with the departmental advisor and the person responsible for the module (submission of the study plan and module description).
- Final recognition after successful passing of exams
- **Learning Agreement and clarification of credit recognition only required after place confirmation**

# ERASMUS / SEMP - Time

- You determine the time of the stay abroad
- Depends on:
  - Your individual course of study
  - your individual study planning
  - Your project abroad and your motivation
- Tip: Consult with departmental advisor (e.g. courses only in certain semesters?).
- Note: Many students take advantage of the transition from bachelor's to master's studies (enrollment!)
- Recommendation: only from the 5th semester  
Bachelor on

# ERASMUS / SEMP – Language skills

- Sufficient knowledge of the language of instruction at partner university required (see Erasmus brochure)
- Criterion in the selection process
- Therefore: Submit proof of language
- Language courses and tests at TUM language center



Bild: Esther Stärcke / TUM

# Tips for preparation

- Experience reports of former outgoing student  
<https://tum.adv-pub.moveon4.de/global-experiences/>
- Contact former/current Erasmus/SEMP students (via experience reports, International Affairs Delegate)
- Become mentor for incoming exchange students at the Mentoring programm of TUM ED  
<https://collab.dvb.bayern/x/yAEqN>
- Contact current incoming exchange students (students of our partners)

# ERASMUS+ SMP

## ERASMUS+ Internship stays (SMP)



Bild: Franziska Shu / TUM

# ERASMUS+ SMP - Requirements

- Enrollment in a course of study at TUM leading to a university degree (incl. doctorate) before and during the time of the exchange
- For graduate internship: enrollment at TUM at time of application and exmatriculation prior to start of internship
- Participation already possible from the beginning of the study
- Internship is meaningfully related to the course of study and beneficial to study objective
- Maximum amount of internship salary: 1,000 €

# ERASMUS+ SMP - Benefits

- Period: 2- 12 months in each study cycle (SMS + SMP in sum)
- Graduate internship: up to 12 months after graduation
- Financial support: amount depends on country and duration of stay
- Social top up for students with fewer opportunities: monthly subsidy amount additionally to the grant amount
- Green Travel Grant: additional financial support for climate-friendly travel
- Free choice of the internship place (self-organized)
- Theses (with practical relevance) at companies or at universities abroad can also be funded
- Support with linguistic and cultural preparation for a stay abroad (TUM Erasmus office and TUM language center)

# ERASMUS+ internship worldwide – new!

- Since 2022, **internships outside Europe** can also be funded through the Erasmus+ program
- Theses outside the Erasmus+ area will continue to be funded via PROMOS
- Contingent of scholarships for internships outside Europe is limited and allocation is made on a "first come, first serve" basis

# ERASMUS+ SMP - Application process

- Independent search for an internship
- Signing of a "Learning Agreement for Trainingship" (by the internship site and the Erasmus representative for internships) → send all documents to International Affairs Delegate at TUM ED (CEGE)
- Apply by portal MoveOn and remember login data  
<https://www.international.tum.de/en/global/erasmusinternships/>
- Upload all documents in application portal MoveOn
- Send online application form via E-Mail: [paola.passadore@tum.de](mailto:paola.passadore@tum.de)
- **Application deadline for an internship within Europe:** at the latest four weeks prior to the start of the internship
- **Application deadline for an internship outside Europe:** at the latest two months prior to the start of the internship

# Tips for preparation

- Tips for finding an internship abroad

<https://www.international.tum.de/en/global/go-international/internships/tips-for-finding-an-internship/>

- Internship reports of former outgoings

<https://tum.adv-pub.moveon4.de/internships-abroad/>

- Contact former/current Erasmus/SEMP students  
(internship reports, International Affairs Delegate)

- Become a mentor for exchange students in the TUM ED  
Mentoring programme: <https://collab.dvb.bayern/x/yAEqN>

# Double Degree Programme

**One study - two degrees**



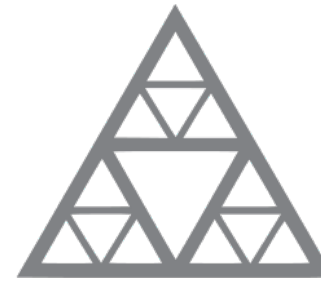
Bild: University of Queensland

# Double Degree – Description

- One master's degree - two equivalent national degrees
- Minor extension of study time (*do more – get more*)
- 2 – 4 semesters of stay abroad at partner university
- Process:
  - Bachelor's degree from TUM
  - Successful completion of the 1st master's degree year at TUM (at least 40 ECTS)
  - 2-4 semesters at the partner university (including master's thesis)

# Double Degree – Programme

- Argentina
  - Universidad Nacional de Cuyo (UNCuyo)
  - Universidad Nacional de Tucumán (UNT)
- France:
  - *École des Ponts ParisTech*
- Sweden
  - *Royal Institute of Technology (KTH)*
- Spain:
  - *Universidad Politécnica de Madrid*
- Czech Republik
  - *Czech Technical University in Prague*



École des Ponts  
ParisTech



# Double Degree Programme - Prerequisites

- Enrollment at TUM
- TUM Bachelor degree in Civil or Environmental Engineering
- Above average bachelor exams in Civil or Env. Eng.
- Min. 40 ECTS in master study Civil or Env. Eng. before starting the phase abroad
- (Very) good language skills of the host country (proof by language certificate)

## Double Degree Programme – Benefits

- Tuition fees waived at the partner university\*
- Academic recognition of credits
- Degree of partner university **and** Master's degree of TUM
- Support with academic preparation for a stay abroad (TUM ED)
- Support with linguistic and cultural preparation for a stay abroad (TUM language center, BFHZ)
- Support from the host institution regarding accommodation, orientation days etc.
- Financial support: ERASMUS grant (for max. 12 months, only for Erasmus countries); scholarship and travel allowance for Argentina; Auslands-BaföG (BaföG for stays abroad); PROMOS (for thesis), DAAD Annual Scholarship (apply early!)

*\*enrollment fees can be required from some partner universities*

# Double Degree Programme - Application

1. Application for Double Degree Programm = Online-application in Moveon together with Erasmus application (see slides 15ff)
2. Application deadline: Mid-January e.y.
3. After nomination by TUM ED: Application to the partner university
4. Final decision about acceptance/rejection by partner university

# Departmental Programs – TUM ED (CEGE)



# Departmental Programs

- Additional exchange opportunities for students of TUM ED (CEGE) outside of Erasmus+ Partner countries
- Current exchange options:
  - German Jordanian University, Jordan
  - Osaka Institute of Technology, Japan
- Selection and nomination by TUM ED (CEGE)
- Application for Double Degree Programme = Online-application in Moveon together with Erasmus application (see slides 15ff)

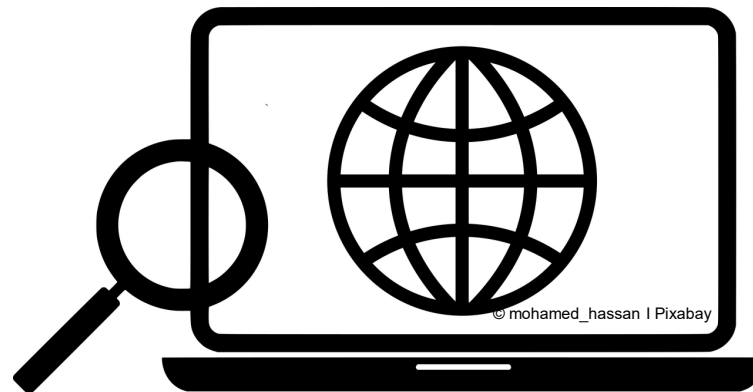
## Detailed information :

<https://collab.dvb.bayern/x/JKBKB>

<https://collab.dvb.bayern/x/GqBKB>

<https://collab.dvb.bayern/x/GaBKB>

<https://www.international.tum.de/en/global/going-abroad/>



# Contact details

Nadin Klomke, M.A.  
International Affairs Delegate

TUM School of Engineering and Design  
Arcisstr. 21, Raum 2727  
(<https://nav.tum.de/room/0507.02.717> )

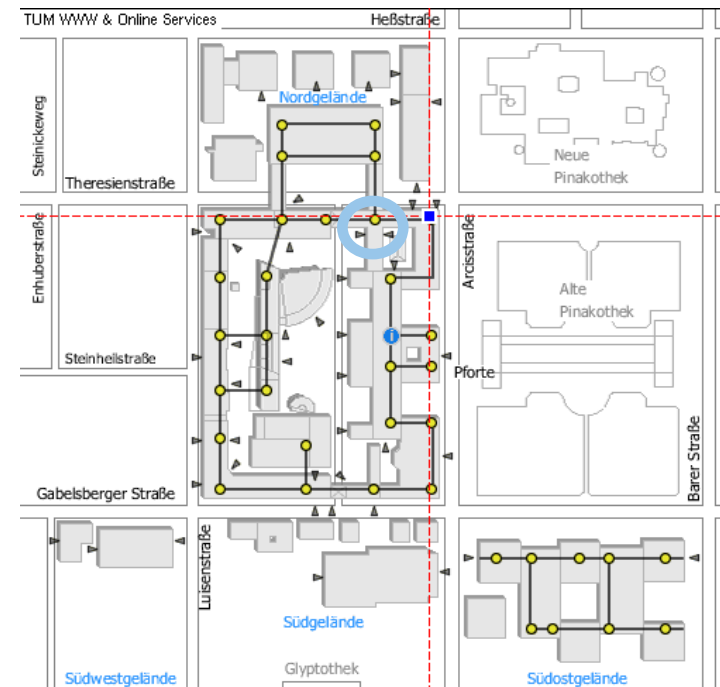
Tel.: 089.289.22427

E-Mail: [n.klomke@tum.de](mailto:n.klomke@tum.de)

Consultation hours:

Tuesday: 9.30 – 11.00 Uhr

Thursday: 9:30 – 11.30 Uhr



Thank you for your attention!



Bild: Michael Meier / TUM

**We look forward to receiving your application!**