

Going abroad with ERASMUS+ / SEMP

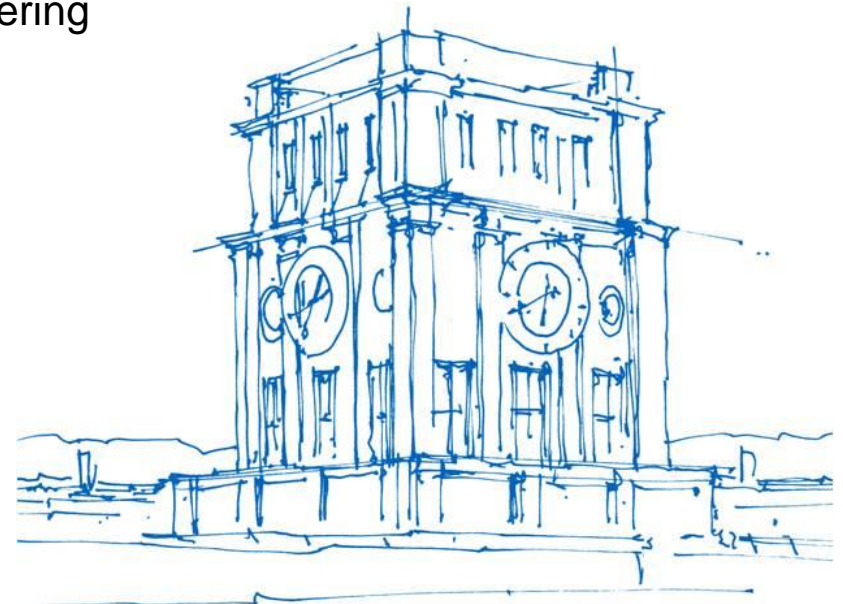
Nadin Klomke

Technische Universität München

TUM School of Engineering and Design

Civil and Environmental Engineering / Geo Engineering

München, 29. November 2023



Uhrenturm der TUM

Schedule

- ❖ ERASMUS+ SMS – Study stays
- ❖ Swiss European Mobility Program – Study stays
- ❖ ERASMUS+ SMP – Internship
- ❖ Swiss European Mobility Program - Internship
- ❖ Double Degree Programme
- ❖ Departmental Programs

ERASMUS+ – Erasmus+ Study Stays and Internships

Study stays and Internships in Erasmus+ program countries

- Study stays (ERASMUS+ SMS)
- Internships in companies and universities (ERASMUS+ SMP)
- Final thesis (SMS or SMP)

- Participating countries: EU member states plus Iceland, Liechtenstein, Macedonia, Norway and Turkey

- Switzerland is not involved: Swiss European Mobility Programm (SEMP)

- More than 350 Partner universities in 28 European countries at TUM

- Most popular countries: Spain, Ireland, Scandinavian countries

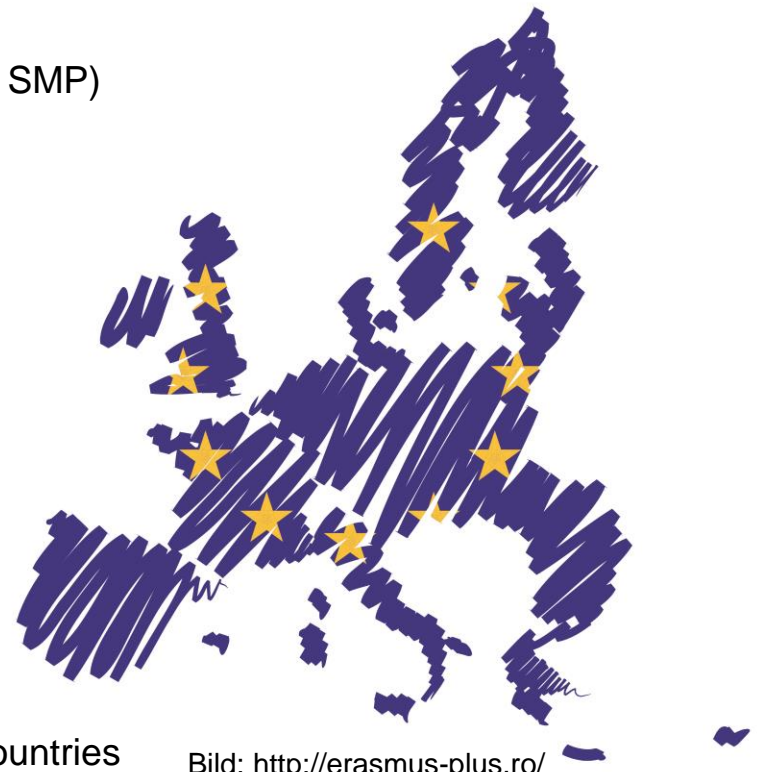


Bild: <http://erasmus-plus.ro/>

ERASMUS+ SMS

ERASMUS+ Study stays (SMS)



ERASMUS+ SMS - Benefits

- Period: 2- 12 months in each study cycle (Bachelor, Master, Doctorate)
- Tuition fees waived at the partner university
- Financial support: amount depends on country and duration of stay
- Special needs grant „top up“ for students with fewer opportunities: monthly subsidy amount additionally to the grant amount
- Green Travel Grant: additional financial support and travel days for climate-friendly travel
- Support with linguistic and cultural preparation for a stay abroad (TUM Erasmus office and TUM language center)
- Support with academic preparation for a stay abroad (TUM ED)
- Academic recognition of credits is possible
- Support from the host institution regarding accommodation, orientation days etc.

ERASMUS+ SMS - Requirements


- Enrollment at TUM before, during and after stay abroad
- Successful completion of at least the first year of study (starting from Bachelor's study)
- Sufficient knowledge of the language of the courses at host university
- Good academic performance

ERASMUS+ SMS – Exchange opportunities

- TUM ED CEE/GEE: around 170 places at more than 50 partner universities
- Agreements finalised for courses of study Civil Engineering, Environmental Engineering, Geo Engineering
- Students have to choose from the course offer of the partner *department*
- Selection of partner universities according to study-relevant criteria (course offer, relevance of course offer for degree, semester period) and existing knowledge of the lecture language
- Overview of partner universities in data base:
<https://tum.moveon4.de/publisher/1/eng>
- Overview of partner universities in Erasmus brochure:
<https://collab.dvb.bayern/x/JKBKB>

Exchange opportunities – Data base

- Filter by:
 - **Program:** Erasmus Studies or Swiss European Mobility Program Studies
 - **Subject Area:** ED-Civil and Environmental Engineering; ED-Geology
 - **Country:** Destinations of choice



International Opportunities Gateway

Cooperating worldwide, TUM offers you many opportunities for international experience, ranging from short programs to several semesters abroad. Make use of these programs to advance your academic profile and linguistic skills, boost your career prospects and have a lot of fun!

In this database you will find the opportunities for TUM-students for a [stay abroad](#) with further details.

Please select the program you are interested in first and then your subject area. In case you want to go directly to a partner institution, please select the country first.

Once the world map has appeared, you can select the partner institution you are interested in below the map. Should there be a problem with the link, please try a different browser or click on the button „Relations“ (next to „Institutions“) above the world map.

Via this database you can also browse reports of TUM students who have been abroad: please go to the button „Study Reports“ next to „Relations“ (on the page of the partner institution). Our former database offers additional reports: [moveonline.zy.tum.de/move/moveonline/exchanges/search.php](#). Make sure you tap into the wealth of experience of TUM students before you!

More information about our exchange programs, application procedures and funding possibilities can be found on the website of the International Center: [www.international.tum.de/en/go-international/](#).

Please note that the summer courses & research internship program listed in the database are administered solely by our partner institutions and that TUM IC can therefore not offer advisory services regarding these programs. Please use the contact information provided on the partner website.


Enjoy exploring a world full of international opportunities!

Your TUM IC team

Text search <input style="width: 90%;" type="text"/>	Subject Area <input style="width: 90%;" type="text"/>
Program <input style="width: 90%;" type="text"/>	Country <input style="width: 90%;" type="text"/>
Partner Institution <input style="width: 90%;" type="text"/>	Study Level <input style="width: 90%;" type="text"/>
<input style="background-color: #76b82a; color: white; padding: 5px 10px; border: none;" type="button" value="Search"/>	

Partner universities – Data base

- Overview of all current partner universities
- Contains short overview of exchange possibility and section „Experience reports“
- Check data base for current exchange opportunities




Text search Subject Area ED-Civil and Environmental Engineering

Program Erasmus Studies / Studium (SMS) Country

Institution Study Level

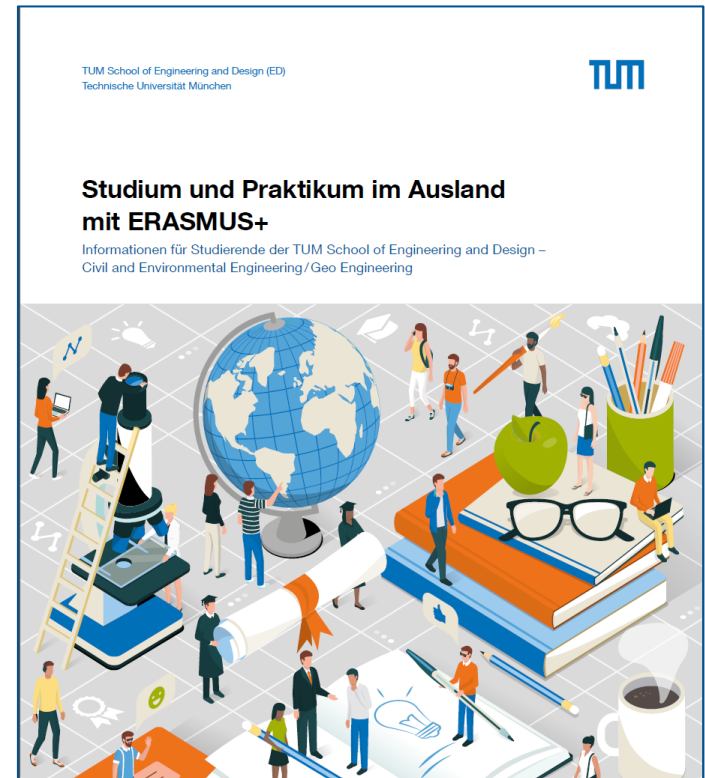
Institutions Relations

World map showing partner university locations (red dots).

 Austria-Technische Universitaet Wien (TUW)	 Belgium-Katholieke Universiteit Leuven (KU)	 Czech Republic-Ceské Vysoké Učení Technické v Praze (CTU)
 Denmark-Danmarks Tekniske Universitet	 Estonia-Tallinna Tehnikakool (TalTech University)	 Finland-Aalto-yliopisto
 France-ECOLE POLYTECHNIQUE	 France-Ecole Spéciale des Travaux Publics, du Bâtiment et de l'Industrie	 France-Institut National des Sciences Appliquées de Lyon
 France-UniLaSalle Rennes - Ecole des Métiers de l'Environnement	 France-Université Paul Sabatier - Toulouse III	 Greece-Ethniko Metsovio Polytechnio (NTUA)
 Hungary-Budapesti Műszaki és Gazdaságtudományi Egyetem	 Ireland-University College Dublin, National University of Ireland	 Italy-Politecnico di Milano
		 Italy-Politecnico di Torino

Exchange opportunities - Booklet

- Overview of partner universities of TUM ED – CEE/GEE
- Contains information on:
 - Suitable fields of study and study level
 - Number of places and max. duration of study
 - Language of instruction and required language skills
 - Semester dates and application deadlines
 - Course offerings, course catalogue and professional requirements



Exchange opportunities – Booklet

Partneruniversitäten auf einen Blick

Belgien Leuven



[1]

KU Leuven

<https://www.kuleuven.be/english/admissions/exchange>

Studiengang	Bau
Plätze	1 (je max. 10 Monate)
Austauschlevel	Bachelor, Master (mindestens 3 Studienjahre absolviert)
Semesterdaten	September – Februar Februar – Juli
Bewerbungsfristen	Ende April für 1. Semester Anfang Oktober für 2. Semester
Unterrichtssprache	Englisch, Niederländisch
Sprachkenntnisse	B2 Englisch oder Niederländisch

Fachliche Informationen:

- Wahl von Kursen im Umfang von maximal 30 ECTS wird empfohlen
- Mehrzahl der gewählten Kurse muss von der „Faculty of Engineering Science“ sein
- maximal 2 Kurse können von anderer Fakultät gewählt werden
- es können Kurse von verschiedenen Masterprogrammen kombiniert werden
- Kursliste: <https://eng.kuleuven.be/en/study/prospective-students/non-degree-seeking-students>

Dänemark Lyngby



[2]

Danmarks Tekniske Universitet

<http://www.dtu.dk/english/education/incoming-students>

Studiengang	Umwelt, Bau
Plätze	12 (je max. 10 Monate)
Austauschlevel	Bachelor, Master
Semesterdaten	August – Dezember Januar – Mai
Bewerbungsfristen	Mitte April für 1. Semester Anfang November für 2. Semester
Unterrichtssprache	Englisch
Sprachkenntnisse	B2 Englisch

Fachliche Informationen:

- Austauschstudierende können aus dem gesamten Kursangebot in englischer Sprache wählen
- Bachelorstudierende können Masterkurse wählen, sofern sie die fachlichen Voraussetzungen der jeweiligen Kurse erfüllen
- empfohlenes Arbeitspensum beträgt 25-30 ECTS (maximal 35 ECTS, entspricht 7 x 5 credits courses) pro Semester
- Kurskatalog: <http://kurser.dtu.dk/search>

Partneruniversitäten auf einen Blick

Estland Tallinn



[3]

Tallinna Tehnikaülikool

<https://www.ttu.ee/studying/exchange-studies/exchange-studies-incomingoutgoing/>

Studiengang	Umwelt
Plätze	4 (je max. 5 Monate)
Austauschlevel	Master
Semesterdaten	September – Januar Februar – Juni
Bewerbungsfristen	Mitte Mai für 1. Semester Mitte November für 2. Semester
Unterrichtssprache	Englisch
Sprachkenntnisse	B2 Englisch

Fachliche Informationen:

- mindestens 70 % der gewählten Kurse müssen Studienniveau und Studiengang an Heimatuniversität entsprechen
- gefordertes Arbeitspensum beträgt min. 15 ECTS pro Semester
- Kursübersicht: <https://www.ttu.ee/studying/exchange-studies/exchange-studies-incomingoutgoing/before-studies/courses-in-english/>

Finnland Espoo/Helsinki



[4]

Aalto-yliopisto

<https://into.aalto.fi/display/enuudet/Incoming+exchange+students>

Studiengang	Bau
Plätze	3 (je max. 10 Monate)
Austauschlevel	Master (Bachelorstudierende erlaubt, wenn sie mindestens 2 Studienjahre absolviert haben)
Semesterdaten	August – Dezember Januar – Juni
Bewerbungsfristen	Ende April für 1. Semester Mitte Oktober für 2. Semester
Unterrichtssprache	Englisch
Sprachkenntnisse	B2 Englisch

Fachliche Informationen:

- mindestens 2/3 der gewählten Kurse müssen vom selben Studiengbiet an der „School of Engineering“ sein
- gefordertes Arbeitspensum beträgt 30 ECTS pro Semester
- Kursbeschreibungen sind verfügbar unter: <https://mycourses.aalto.fi/>
- Kursliste: <https://into.aalto.fi/display/enuudet/School-of+Engineering>

ERASMUS SMS+ - Application process

- Application deadline: Mid-January e. y. for the following entire academic year (incl. summer semester)
 - **Next round of applications: 1. Dez. 2023 – 15. Jan. 2024 (12:00h)**
- 1st Step: Application at TUM ED – CEE/GEE
(application documents in German or Englisch)
<https://collab.dvb.bayern/x/K6BKB>
- 2nd Step: Selection by TUM ED – CEE/GEE
(Selection based on academic performance, motivation, language skills)
- 3rd Step: Official nomination at partner university
- 4th Step: Application at partner university
(application documents in Englisch or language of instruction)
- 5th Step: Acceptance/Rejection by the partner university
- 6th Step: Submission of the scholarship documents to the TUM G&A

ERASMUS SMS+ - Application documents

- Register at application portal MoveOn – Remember login data!
- Fill online application form
- Up to **4** optional universities possible
- Upload the following documents:
 - Current grade report of all previous achievements since Bachelor's degree
 - Preliminary Study Programme (for each selected university)
 - CV
 - Motivation letter (only one, related to the first choice)
 - Proof of language skills (e.g. language certificate, language test)
- Upload complete documents to the portal on time

[Information on application:](https://collab.dvb.bayern/x/K6BKB)
<https://collab.dvb.bayern/x/K6BKB>

ERASMUS SMS+ – Study Program

- Find out about courses offered at partner university (homepage and/or fact sheet of partner university, see information in Erasmus brochure)
- Compile an individual study plan for each desired university
- List it in the study program form
- Upload it in the application portal
- Study program is preliminary
- Only after a place has been confirmed you create a "Learning Agreement"

STUDIENPROGRAMM / STUDY PROGRAMME		
Studienjahr:		Studiengang:
Name Student/in:		
Gastuniversität:		
Vorläufiges Studienprogramm: (Liste der Lehrveranstaltungen an der Gastuniversität)		
LV-Nr.	Titel der Lehrveranstaltung	Anzahl ECTS credits
..... Unterschrift Student/in		

ERASMUS SMS+ - Recognition of credits

- Credits earned at the host university can be recognized for your degree at TUM
- Prior to the stay abroad, clarification of the possible recognition with the departmental advisor and the person responsible for the module (submission of the study plan and module description).
- Final recognition after successful passing of exams
- **Learning Agreement and clarification of credit recognition only required after place confirmation**

ERASMUS SMS+ - Time

- You determine the time of the stay abroad
- Depends on:
 - Your individual course of study
 - your individual study planning
 - Your project abroad and your motivation
- **Tip: Consult with departmental advisor (e.g. courses only in certain semesters?).**
- **Note: Many students take advantage of the transition from bachelor's to master's studies (enrollment!)**
- **Recommendation: only from the 5th semester**
Bachelor

ERASMUS SMS+ – Language skills

- Sufficient knowledge of the language of instruction at partner university required (see Erasmus brochure)
- Criterion in the selection process
- Therefore: Submit proof of language
- Language courses and tests at TUM language center



Bild: Esther Stärcke / TUM

ERASMUS SMS+ - Leave of absence

- max. 2 semesters leave of absence for stay abroad
- Only repeat exams possible
- Subject semesters are not counted further
 - except: recognition of credits from abroad in the amount of more than 21 ECTS
- Please note different semester times at host university
- Application for leave of absence at Enrollment Office:
<https://www.tum.de/en/studies/during-your-studies/organizing-your-studies/leave-of-absence>

ERASMUS+ SMS+ - Erasmus grant

- is linked to the Erasmus application
- Compensation for additional costs incurred abroad (no full scholarship)
- Passing at least 10 ECTS per semester for Erasmus grant
- Proof of at least 60 days stay at the partner university abroad
- Payment of the Erasmus+ grant in two installments
- Further details are regulated in the Grant Agreement
- For country categories, daily rate amounts, and payment rates, see download “Erasmus+ grant”:

<https://www.international.tum.de/erasmusstudium/>

Scholarships for studies in Switzerland

- Scholarships for TUM students are taken over by Swiss universities
- Information on how to apply for the scholarship can be obtained from the TUM Global & Alumni Office after a place has been confirmed.



Photo: Marina Schreier / TUM

Tips for preparation

- Experience reports of former outgoing student
<https://tum.moveon4.de/publisher/1/eng>
- Contact former/current Erasmus/SEMP students (via experience reports, International Affairs Delegate)
- Become mentor for incoming exchange students at the Mentoring programm of TUM ED
<https://collab.dvb.bayern/x/CqBKB>
- Contact current incoming exchange students (students of our partners)

ERASMUS+ SMP

ERASMUS+ Internship stays (SMP)



Bild: Franziska Shu / TUM

ERASMUS+ SMP - Requirements

- Enrollment in a course of study at TUM leading to a university degree (incl. doctorate) before and during the time of the exchange
- For graduate internship: enrollment at TUM at time of application and exmatriculation prior to start of internship
- Participation already possible from the beginning of the study
- Internship is meaningfully related to the course of study and beneficial to study objective
- Maximum amount of internship salary: 1,000 €

ERASMUS+ SMP - Benefits

- Period: 2- 12 months in each study cycle (Bachelor, Master, Doctorate)
- Graduate internship: up to 12 months after graduation
- Financial support: amount depends on country and duration of stay
- Social top up for students with fewer opportunities: monthly subsidy amount additionally to the grant amount
- Green Travel Grant: additional financial support for climate-friendly travel
- Support with linguistic and cultural preparation for a stay abroad (TUM Erasmus office and TUM language center)
- Free choice of the internship place (self-organized)
- Theses (with practical relevance) at companies or at universities abroad can also be funded.

ERASMUS+ internship worldwide – new!

- Since 2022, internships outside Europe can also be funded through the Erasmus+ program
- Theses outside the Erasmus+ area will continue to be funded via PROMOS
- Contingent of scholarships for internships outside Europe is limited and allocation is made on a "first come, first serve" basis

ERASMUS+ SMP - Application process

- Independent search for an internship
- Signing of a "Learning Agreement for Trainingship" (by the internship site and the Erasmus representative for internships) → send all documents to International Affairs Delegate at TUM ED
- Apply by portal MoveOn and remember login data
<https://www.international.tum.de/en/global/erasmusinternships/>
- Upload all documents in application portal MoveOn
- Send online application form via E-Mail: tumerasmus-praktikum@zv.tum.de
- **Application deadline for an internship within Europe:** at the latest four weeks prior to the start of the internship
- **Application deadline for an internship outside Europe:** at the latest two months prior to the start of the internship

ERASMUS+ SMP – Application documents

- Online application form
- Erasmus+ Learning Agreement for Traineeship
- Motivation letter
- CV
- Current grade report
- Current certificate of enrollment (for graduate internships: current certificate of the expected end of studies at TUM)

Application documents and process:

<https://www.international.tum.de/en/global/erasmusinternships/>

ERASMUS+ SMP – Leave of Absence

- max. 2 semesters leave of absence for stay abroad
- Voluntary internship: Leave of absence only if duration extends over at least half of a semester and with the consent of the TUM ED
- Subject semesters do not count
- Only repeat exams during leave of absence
- Application for leave of absence to the Enrollment Office: <http://www.tum.de/studium/im-studium/beurlaubung/>

ERASMUS+ SMP – Erasmus grant

- Financial support is based on cost of living in target countries (3 country groups)
- Payment of the Erasmus+ grant in two installments
- Further details are regulated in the Grant Agreement
- For country categories, amount of daily rates as well as payment rates, please see list “Scholarship rates”:

<https://www.international.tum.de/en/global/erasmusinternships/>

Internship stays in Switzerland

Swiss-European Mobility Programme - Internship“ (SEMP Internship)

- Funding for internships and theses:
 - mainly at Swiss universities
 - preferably at TUM partner universities
 - No graduate internship possible
- Funding is limited - not all internships can be funded →,first come, first serve‘
- Apply to TUM Global & Alumni Office (TUM G&A)
- TUM G&A nominates applicants at Swiss (partner) university
- **no guarantee for funding by the partner university!**

Information on application:

<https://www.international.tum.de/en/global/go-international/internships/internships-in-switzerland/>

Tips for preparation

- Tips for finding an internship abroad

<https://www.international.tum.de/en/global/go-international/internships/tips-for-finding-an-internship/>

- Internship reports of former outgoings

<https://tum.moveon4.de/publisher/6/deu>

- Contact former/current Erasmus/SEMP students (internship reports, International Affairs Delegate)

- Become a mentor for exchange students in the Mentoring programme of TUM ED:

<https://collab.dvb.bayern/x/CqBKB>

Double Degree Programme

One study - two degrees



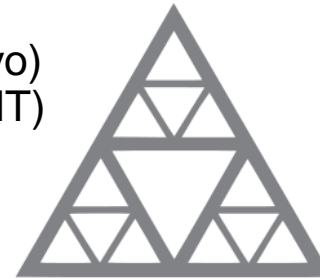
Bild: University of Queensland

Double Degree – Description

- One master's degree - two equivalent national degrees
- Minor extension of study time (*do more – get more*)
- 2 – 4 semesters of stay abroad at partner university
- Process:
 - Bachelor's degree from TUM or external university
 - Successful completion of the 1st master's degree year at TUM (at least 40 ECTS)
 - 2-4 semesters at the partner university (including master's thesis)

Double Degree – Programme

- Argentina
 - Universidad Nacional de Cuyo (UNCuyo)
 - Universidad Nacional de Tucumán (UNT)
- France:
 - *École des Ponts ParisTech*
 - (*École Polytechnique*)
- Sweden
 - *Royal Institute of Technology (KTH)*
- Spain:
 - *Universidad Politécnica de Madrid*
- Czech Republik
 - *Czech Technical University in Prague*



École des Ponts
ParisTech



Double Degree Programme - Prerequisites

- Enrollment at TUM
- Bachelor degree in Civil or Environmental Engineering
- Above average bachelor exams in Civil or Env. Eng.
- Min. 40 ECTS in master study Civil or Env. Eng. before starting the phase abroad
- (Very) good language skills of the host country (proof by language certificate)

Double Degree Programme – Benefits

- Tuition fees waived at the partner university*
- Academic recognition of credits
- Degree of partner university **and** Master's degree of TUM
- Support from the host institution regarding accommodation, orientation days etc.
- Support with linguistic and cultural preparation for a stay abroad (TUM Erasmus office and TUM language center)
- Support with academic preparation for a stay abroad (TUM ED)
- Financial support: ERASMUS grant (for max. 12 months, only for Erasmus countries); scholarship and travel allowance for Argentina; Auslands-Bafög (Bafög for stays abroad); PROMOS (for thesis), DAAD Annual Scholarship (apply early!)

Double Degree Programme - Application

1. Application for Double Degree Programm = Online-application in Moveon together with Erasmus application (see slides 12ff)
2. Application deadline: Mid-January e.y.
3. After nomination by TUM ED: Application to the partner university
4. Final decision about acceptance/rejection by partner university

Departmental Programs – TUM ED (CEE/GE)



Departmental Programs

- Additional exchange opportunities for students of TUM ED (CEE/GE) outside of Erasmus+ Partner countries
- Current exchange options:
 - German Jordanian University, Jordan
 - Osaka Institute of Technology, Japan
- Selection and nomination by TUM ED (CEE/GE)
- Application for Double Degree Programm = Online-application in Moveon together with Erasmus application (see slides 12ff)

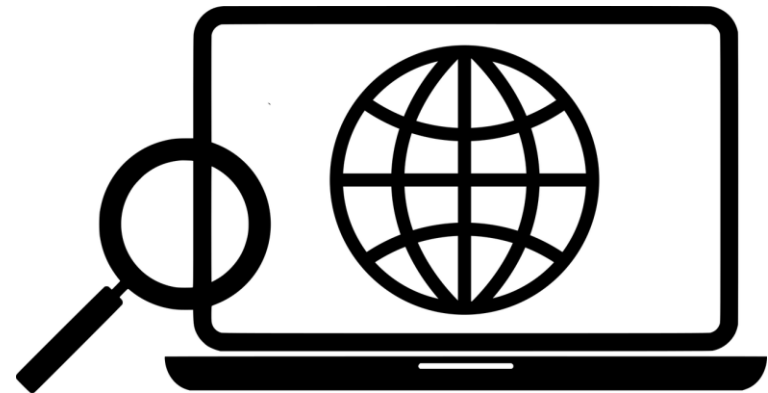
Detailed information :

<https://wiki.tum.de/x/uYHnN>

<https://wiki.tum.de/x/vYHnN>

<https://wiki.tum.de/x/wIHnN>

<https://www.international.tum.de/en/global/going-abroad/>



© mohamed_hassan | Pixabay

Contact details

Nadin Klomke, M.A.
Auslandsbeauftragte

TUM School of Engineering and Design
Arcisstr. 21, Raum 0688ZG
(<https://nav.tum.de/room/0506.Z1.688>)

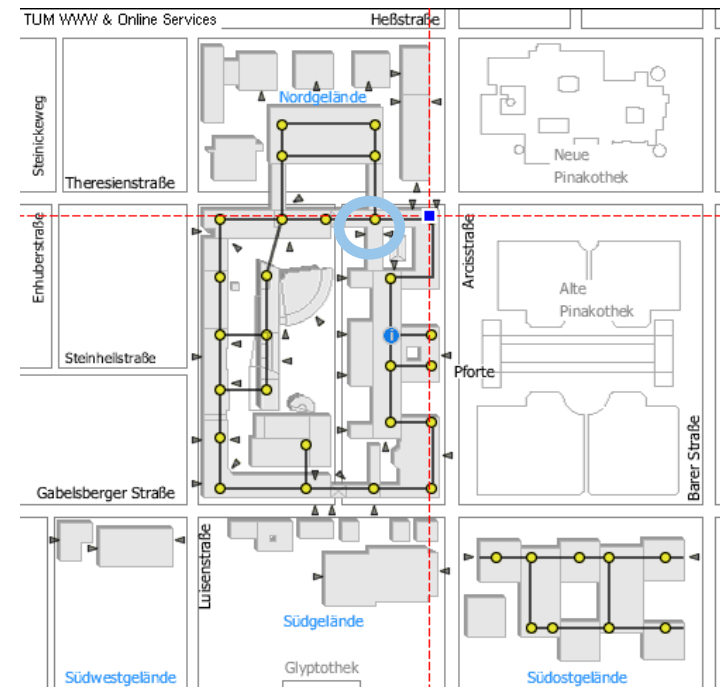
Tel.: 089.289.22427

E-Mail: n.klomke@tum.de

Consultation hours:

Tuesday: 9.30 – 11.00 Uhr

Thursday: 9:30 – 11.30 Uhr



Thank you for your attention!



Bild: Michael Meier / TUM

We look forward to receiving your application!