

Halfway There – on the home stretch to success

A TUM Graduate School Info Event

TUM Graduate School

Wednesday, 27 November 2024

Zoom

welcomeoffice@gs.tum.de

www.gs.tum.de



Agenda

- I. **Timeline for thesis submission** – what must be fulfilled before thesis submission
- II. **Overview – how to submit my thesis** (and what happens afterwards)
- III. **How to publish:** process, authors' rights, open access & affiliation
- IV. **Career planning** – TUM-GS Transferable Skills Training
- V. **Miscellaneous & Q&A**



Timeline for thesis submission

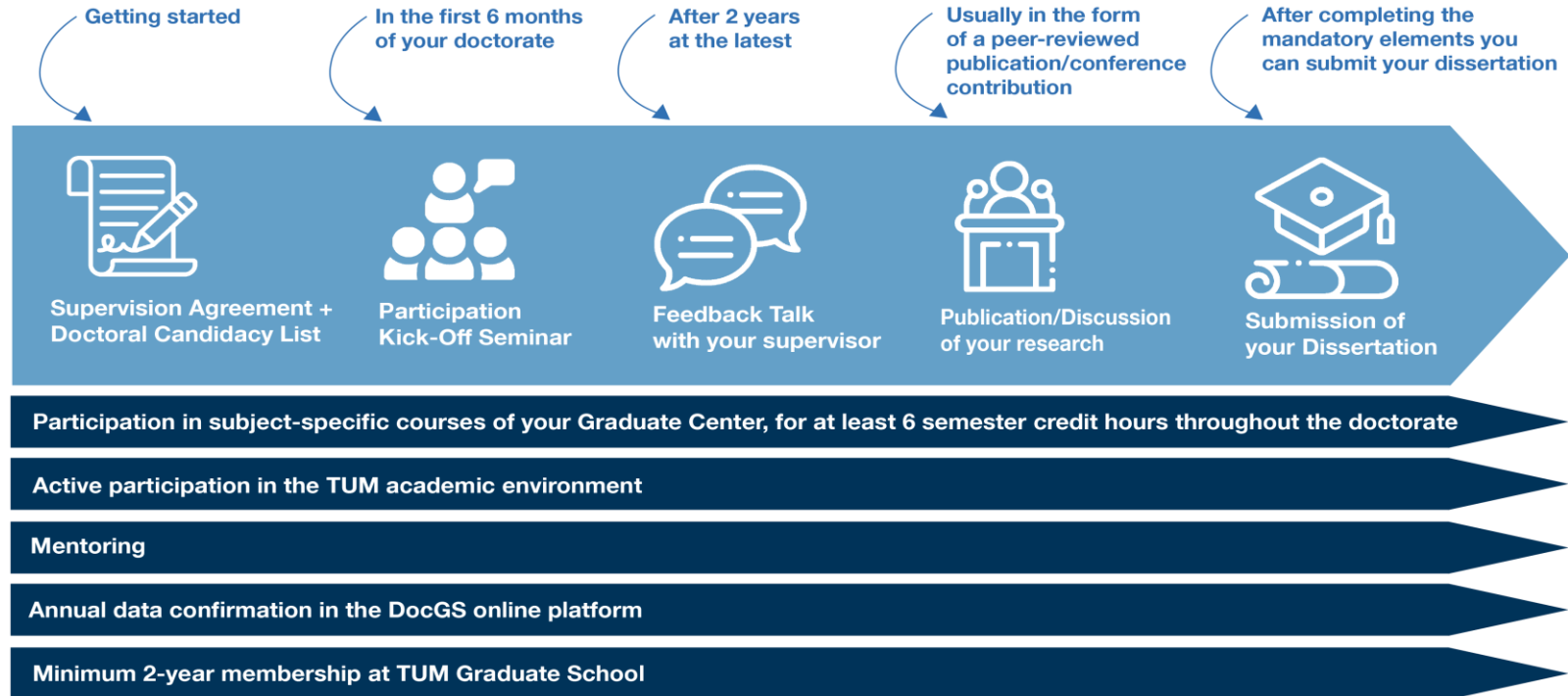
What must be fulfilled before thesis submission

Amelie Haindl

Welcome Office

welcomeoffice@gs.tum.de

Framework & Mandatory Elements of your Doctorate at TUM



Icons: Flaticon - Freepik, Iwito Studio, Juicy Fish

Thesis submission

Overview of the submission process and what comes afterwards

Mo Zhang

Deputy Managing Director

zizheng.zhang@tum.de

Information of the Graduate Center

How the thesis submission process works at the Schools, incl. deadlines:

- CIT: <https://collab.dvb.bayern/display/TUMgccit/Submit+your+dissertation>
- ED: <https://collab.dvb.bayern/display/TUMedschooloffice/Checklist+for+ED%27s+Doctoral+Candidates>
- NAT: <https://academics.nat.tum.de/phd/submission.html>
- LS: <https://www.ls.tum.de/ls/forschung/promotion/abschluss-der-promotion/>
- MH: <https://mgc.mh.tum.de/de> (select your doctoral program)
- MGT: <https://www.mgt.tum.de/faq-center>
- SOT: <https://www.sot.tum.de/sot/promotion/am-ende-der-promotion/>
- Campus Straubing: <https://www.cs.tum.de/promotion-habilitation/promotion/graduierenzentrum-gcs/promotionsablauf/>

When can I submit my thesis?

Thesis submission possible after completion of the TUM-GS qualification program:

- ✓ Kick-off seminar
- ✓ 6 SWS subject-specific courses
- ✓ Discussion of research results in the international scientific community (i.a. international main author publication/ conference paper; peer-reviewed)
- ✓ Feedback talk
- + additional requirements of the Graduate Center (if applicable)

- ✓ At least 2-year minimum membership in the TUM-GS
- ✓ Integration into the academic environment of TUM (,external‘ doctorates)

DocGS automatically activates the function ,**submission of dissertation**‘ in your DocGS progress tree

When can I submit my thesis?

Fortschrittsbaum / Progress Tree

Sie können die einzelnen Abschnitte aufklappen, indem Sie auf + oder die Abschnittsnamen klicken. | Y

- + Entry into Doctoral Candidacy List ✓
- + Qualification Program and Data Confirmation ✓
- + Submission of Dissertation ✓
- + Request for changing personal data in account
- + Request change of data regarding your doctoral project

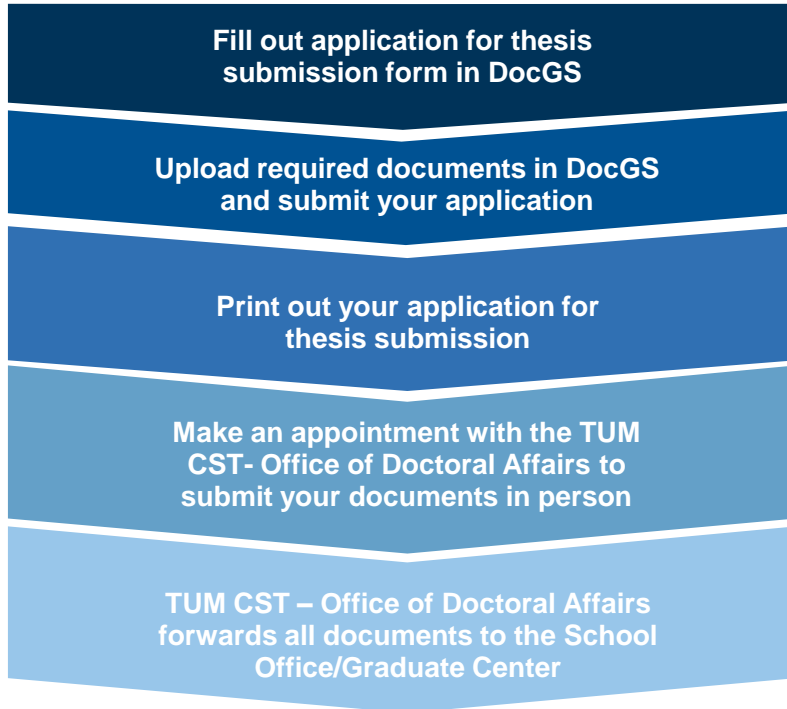
- Einreichung der Dissertation ✓

Reference number: [REDACTED]

Expand all

	Dokumente
Einreichung und Prüfung der Dissertation	
Antrag auf Einreichung	
Antrag auf Einreichung	
Zuständigkeit Fakultät	
Bestellung der Prüfungskommission	
Umlaufverfahren	
Mündliche Prüfung	
Ankündigung der mündlichen Prüfung	
Ergebnis der mündlichen Prüfung	
Bewertung der Dissertation	
Bearbeitung Promotionsamt	
Urkunde	

Overview thesis submission



Keep in mind the respective thesis submission deadlines!
Usually **6-8 weeks before** the date of the School Council meeting.

TUM-GS wiki page: Information on thesis submission process & documents
<https://go.tum.de/507581>

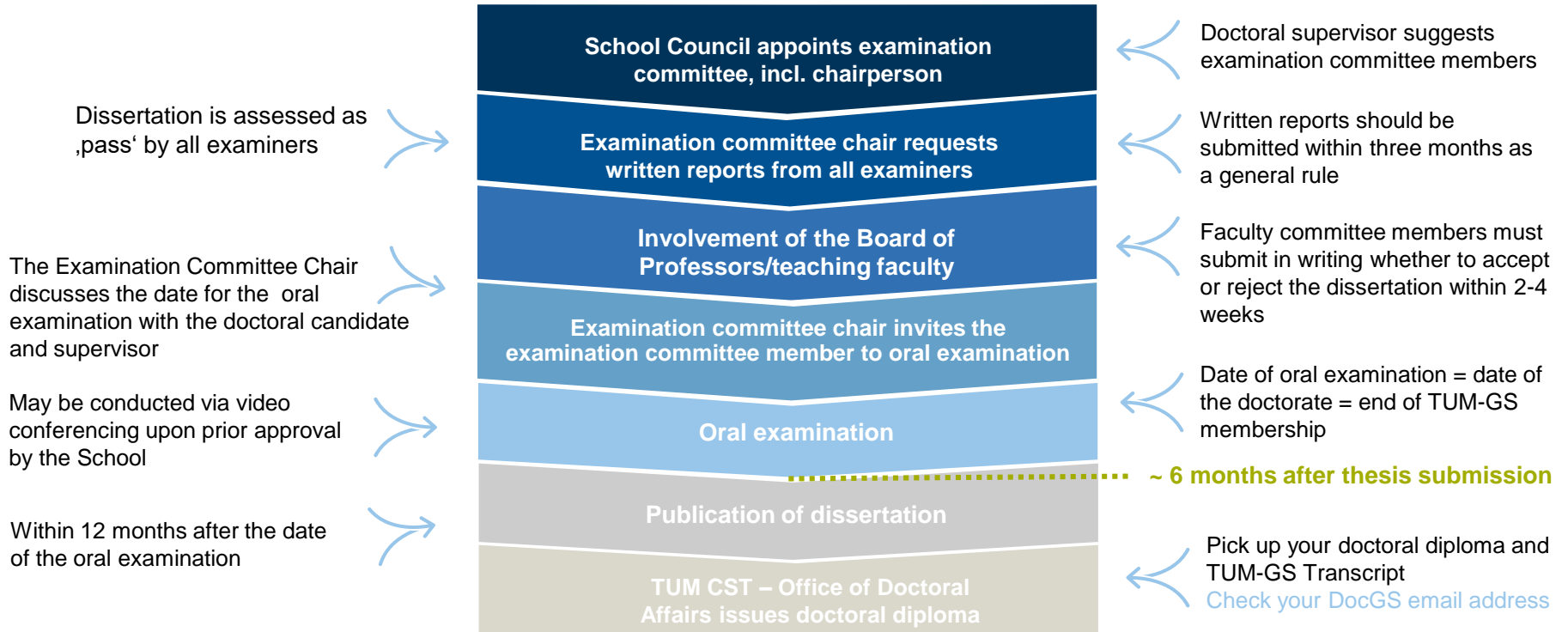


- Dissertation with title page
- Registration of your dissertation for the University Bibliography with dissertation abstract
- CV
- Sworn statement
- List of previous publications

After approval by the Graduate Center and School Office, make an appointment with the Office of Doctoral Affairs **at least 2-3 weeks before the next School Council**

TUM Center for Study and Teaching Promotion
(Office of Doctoral Affairs)
Arcisstraße 21, 80333 München

Overview doctoral examination process



How to publish

Process, author's rights, open access & affiliation

Dr. Katharina Markgraf

Subject librarian Health & Sport Sciences, Head of TUM.University Press
katharina.markgraf@ub.tum.de

Hedwig Bäcker

Information Services – Course Program & First Level Hotline
hedwig.baecker@ub.tum.de

Publication support

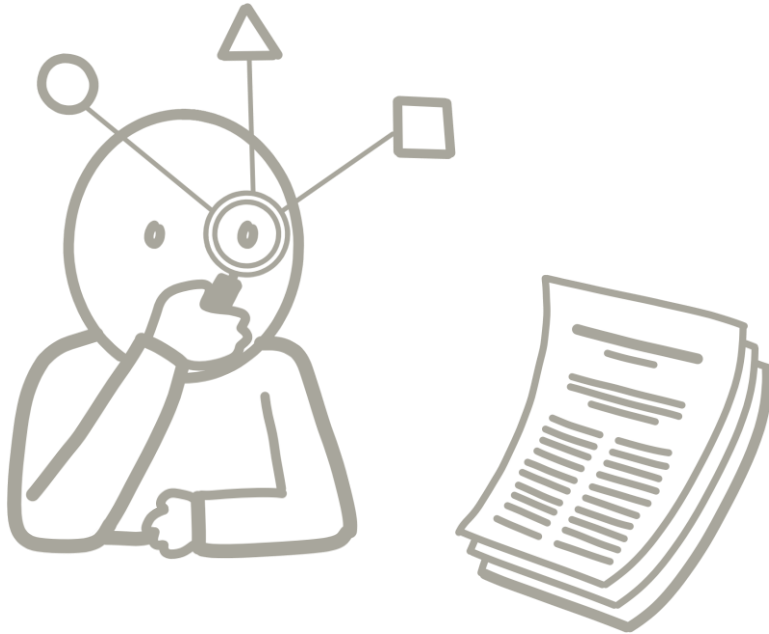
- Choosing the right journal
- Predatory publishers
- Peer review
- Creative Commons
- Publication guidelines
- Academic identity management
- Open Access
- Publishing your work



Exemplary publication process



- Choose the “right” journal
- Adhere to publishers’ conditions (author guidelines, instructions, etc.)
- First editorial review
- Paper is forwarded to **peer-reviewers**
- variants: single blind, double blind, open ...
 - rejection or
 - revision and resubmission or
 - acceptance



Choosing the “right” journal

- Recommendations / own experience
- Access to the journal: Electronic Journal Library / Directory of Open Access Journals
- [Diamond Open Access Publishing](#)
- use with caution: Journal Impact Factor
- *Tipp*: EndNote Manuscript Matcher
- **Predatory publishing** / predatory conferences:
<https://www.ub.tum.de/en/predatory-journals>
- thinkchecksubmit.org for journals
- thinkcheckattend.org for conferences
- Webinar: [Predatory Journals and Conferences](#)





German Copyright

- Protects “personal intellectual creation”
→ **no raw data**
- Only applies to individual authors
- Begins automatically with the creation of a work
- Is non-assignable
- Expires 70 years after the death of the author
- Copyright and employment status: Employees generally remain copyright holders
- [TUM ForTe Patents and Licences](#)
- [Copyright Information](#) of the library

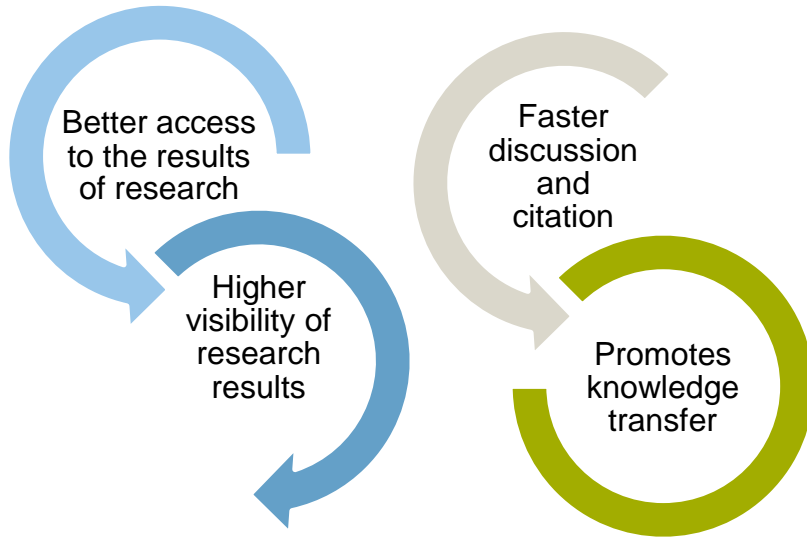
Author's rights and author agreement



- Right of first publication and Right of exploitation
- Right of use: exclusive or **non-exclusive**
- Right of recognition of authorship
- Right of integrity, withdrawal and editing
- [Secondary publication right](#)
- Author agreement for every publication
 - Which usage rights are you granting?
 - Are there third party rights involved?

Federal Ministry of Education and Research:

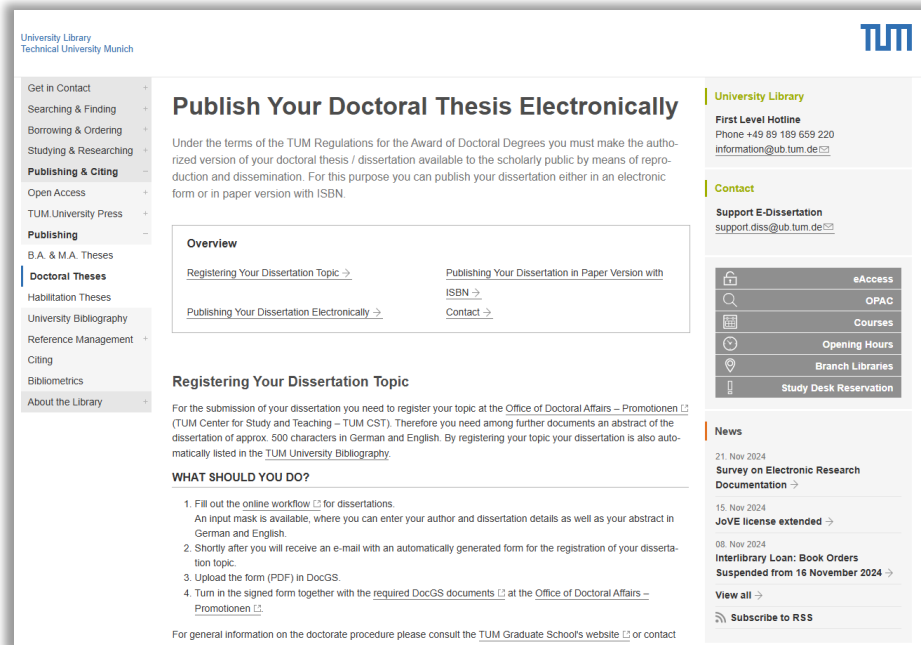
[Copyright in Academic Work](#)



Open Access in academia

- the „green“ way: OA as secondary publication
- the „golden“ way: initial OA publication
 - in a genuine open-access journal
 - in a “hybrid” / embargoed journal
 - article processing charges (APCs)
- TUM agreements with publishers:
<https://www.ub.tum.de/en/open-access-agreements>
- Contact: open-access@ub.tum.de
- **Creative Commons:** BY = Attribution, NC = Non Commercial, ND = No Derivatives, SA = Share Alike

Publishing your doctoral thesis



The screenshot shows the 'Publish Your Doctoral Thesis Electronically' page on the TUM University Library website. The page is divided into several sections:

- Overview:** A navigation menu with links for 'Registering Your Dissertation Topic', 'Publishing Your Dissertation in Paper Version with ISBN', and 'Publishing Your Dissertation Electronically'.
- Registering Your Dissertation Topic:** A section explaining that users need to register their topic at the Office of Doctoral Affairs – Promotoren (TUM Center for Study and Teaching – TUM CST). It mentions that an abstract of the dissertation (approx. 500 characters in German and English) is required, and that registration automatically lists the dissertation in the TUM University Bibliography.
- WHAT SHOULD YOU DO?:** A list of four steps:
 - Fill out the [online workflow](#) for dissertations. An input mask is available, where you can enter your author and dissertation details as well as your abstract in German and English.
 - Shortly after you will receive an e-mail with an automatically generated form for the registration of your dissertation topic.
 - Upload the form (PDF) in DocGS.
 - Turn in the signed form together with the required DocGS documents at the Office of Doctoral Affairs – Promotoren.
- Footer:** A note stating: 'For general information on the doctorate procedure please consult the TUM Graduate School's website or contact...'

The right sidebar contains contact information for the University Library (Phone: +49 89 189 659 220, Email: information@ub.tum.de), a contact link for Support E-Dissertation (Email: support.diss@ub.tum.de), and a navigation menu with links for eAccess, OPAC, Courses, Opening Hours, Branch Libraries, and Study Desk Reservation. A 'News' section lists recent updates, including a survey on electronic research documentation and a JoVE license extension.

- **Register:** Do register your doctoral thesis early!
- By title, abstract in German (about 500 characters), abstract in English (about 500 characters)
- Start at library website: www.ub.tum.de/en/ediss or start at DocGS WIKI <https://collab.dvb.bayern/x/sNkqB>

1. Publish electronically on repository [mediaTUM](#):

- fast and free of charge
- Follow workflow on library's website

2. Publish in print with a (commercial) publisher

- assigning an ISBN

Publishing your thesis with TUM.UP



- Easy publishing of books in limited editions
- Our publishing services: production, distribution
- Author-friendly contract
- Costs: 500,- € plus printing
- Requirements:
 - Thesis written at TUM
 - Provide a print-ready PDF file
 - Fill out the [publication inquiry](#)
- More Info: [Publishing Your Doctoral Thesis](#)

Publishing & Archiving Research Data

Library Website:

[Research Data Management](#)

Library Course:

[Research Data Management Basics](#)

Research data policies of TUM and other institutions, data management plans, data structuring and filing, metadata and metadata standards, long term preservation, file formats, publication of data, persistent identifier

Support by the University Library



©vinnstock_shutterstock_205414891

Documentation is key!

Survey on Electronic Research Documentation

We invite you to participate in our survey on electronic notebooks and lab books! Your insights and preferences are essential for enhancing the availability of these tools at TUM. Join us in shaping the ideal solution for your documentation needs. The survey takes just 5-10 minutes. Your voice is important – thank you for contributing!

<https://go.tum.de/675102>



Visibility as a Scientist

Library Website:

[Bibliometrics](#)

Library Course:

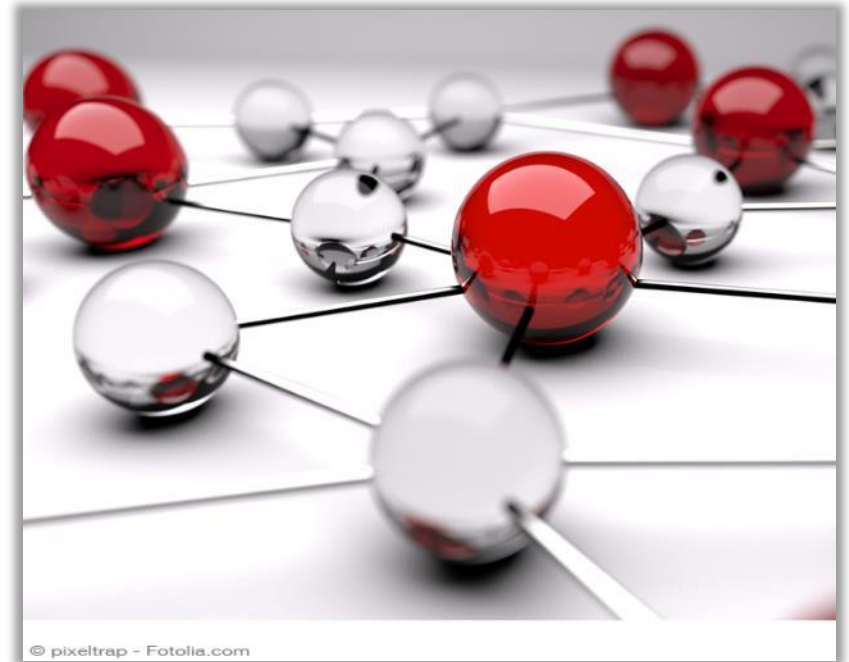
[Visibility and Research Impact](#)

Bibliometrics, Scholarly Communication and
Publication Strategies

Consultation:

[Bibliometrics and Impact Consultation Service](#)

Metrics, academic identity management, bibliometric
analyses



Further Library Support by Courses and Consultations



Library courses and consultations about

Literature Research

Citing

Reference Management

<https://www.ub.tum.de/en/courses>

First Level Hotline – Get in contact

Telephone 089 189 659 220

Chat www.ub.tum.de

E-Mail information@ub.tum.de

Monday to Thursday 8.00 a.m. – 6 p.m.

Friday 8.00 a.m. – 3 p.m.



Career planning

TUM-GS Transferable Skills Training
Supporting you in your doctorate

Karla Urquía
Qualification Program
urquia@zv.tum.de

PASSION LED US HERE

Transferable Skills Training








Icons: Freepik, Designing Hub
via Flaticon

Elevate your potential with the TUM-GS Transferable Skills Training

- 70 + courses per semester
- 43 % courses in English
- 45 % online courses
- 1.000 participants each year
- 95% of all participants recommend our courses

Transferable Skills Training

Category	Courses such as...
	<ul style="list-style-type: none"> • Mindfulness for Stress Relief • Impostor Phenomenon in Science • Durchsetzungsstark und souverän auftreten
	<ul style="list-style-type: none"> • Conflict Management – From Confrontation to Collaboration • Storytelling und Wissenschaft: Forschung spannend vermitteln • Scientific Writing and Yoga Retreat
	<ul style="list-style-type: none"> • Agile Project Management with SCRUM • Basics in Business Administration • Eyecatching Poster erstellen
	<ul style="list-style-type: none"> • Lateral Leadership • Fit for Leadership?! • Be a strong and authentic female leader
	<ul style="list-style-type: none"> • How to play the German research and innovation system: hands-on career guidance for Early Career Researchers • Training for your Career Planning • Essential Skills for a Career in Industry - How to be more Employable in the Private Sector!



Miscellaneous

What we would like you to know

Amelie Haindl

Welcome Office

welcomeoffice@gs.tum.de

TUM-GS Wiki

You can find additional information on our TUM-GS Wiki Page

<https://collab.dvb.bayern/display/tumgs21/TUM+Graduate+School>

We want your opinion!

Please fill out our evaluation and tell us what you think about our info event!



<https://go.tum.de/443076>

Learn more and stay in touch!

Please do not hesitate to contact us via welcomeoffice@gs.tum.de



Visit our website
www.gs.tum.de



Subscribe to our
newsletters



Follow
[@tum.graduateschool](https://www.instagram.com/tum.graduateschool)
on Instagram



Follow TUM
Graduate School
on LinkedIn