

# Truffle Hunters

TATEV TSOKOLAKYAN | NATALIE ADAM | NUO XU

---

# Setup

---

MongoDB, Nodejs(Mongoose and Express), AWS T3.micro

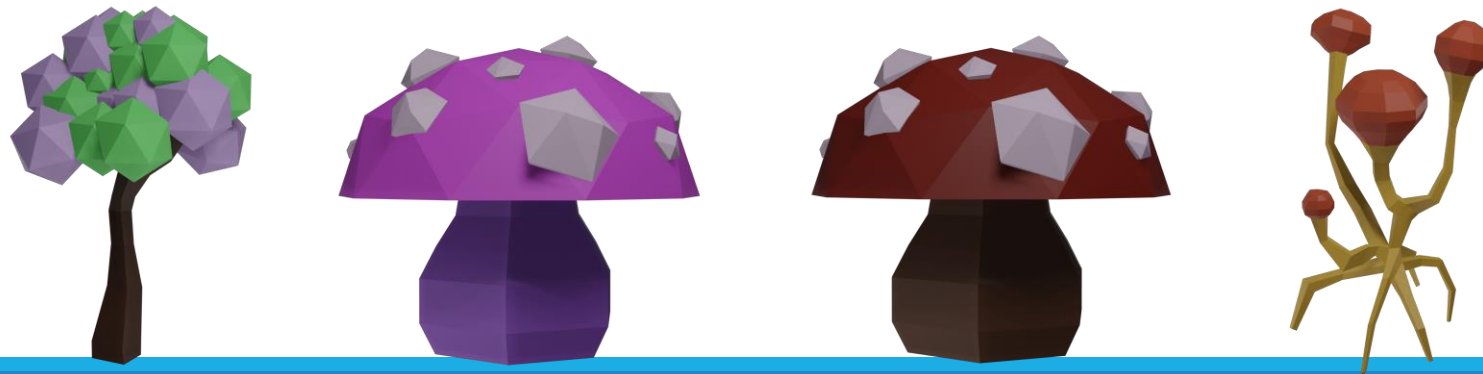
Unity 2021.3.33f1 or higher

Mapbox Unity SDK

Unity ARFoundations and XR Interaction Toolkit

Unity Barracuda

Blender



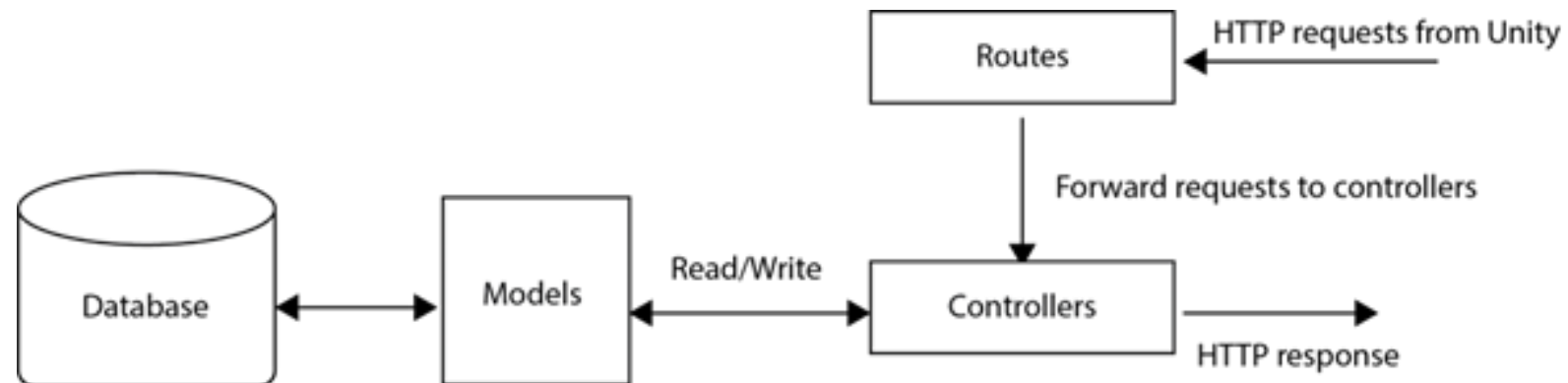
# Backend Development

---

MongoDB: Database model

Express.js: Routes and controllers

UnityWebRequest: Server client talking

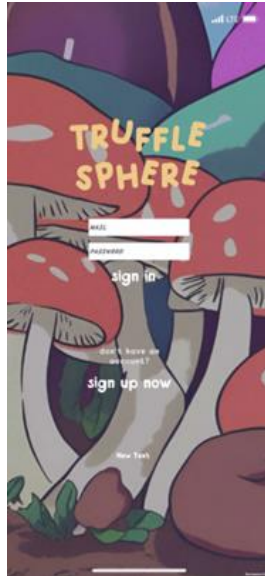


# Location-Based Games

Login: Username and password

Map: Location tracking and event spawning using Mapbox API

Capture: Truffle spawning and XP collection



# Truffle Spawning

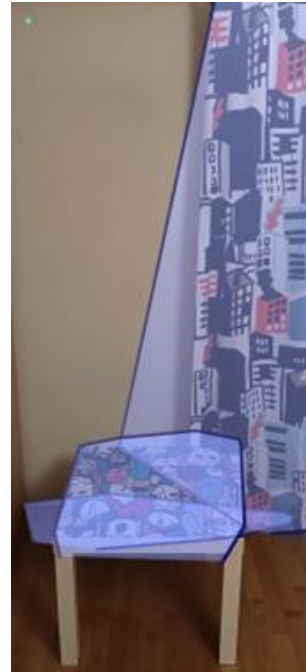
---

## PLANE DETECTION

Trackable flat surface

AR Raycast Manager

Distance between truffle



## OBJECT OCCLUSION

AR Occlusion Manager

Depth buffer



# Truffle Collection

---

## STYLE TRANSFER

Unity Barracuda

Pix2Pix

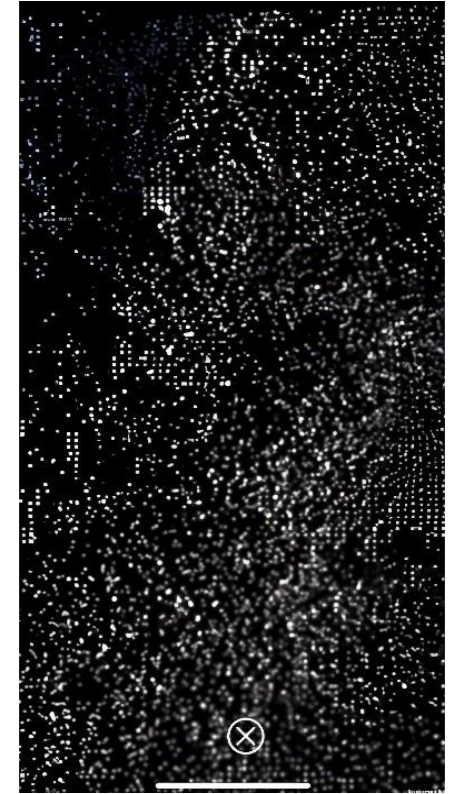
ONNX



## PARTICLE SYSTEM

Vertex and Pixel Shaders

Optical Flow



# Future Work

---



TRUFFLE GENERATING  
SYSTEM



AUDIO AR



TRADE SYSTEM



TRUFFLE COLLECT  
TOOLS

# Gameplay Trailer

---





# References

---

Unity Technologies. (2022). "Unity AR Foundation Manual." Retrieved 12. March 2024, from <https://docs.unity3d.com/Packages/com.unity.xr.foundation@5.1/manual/index.html>.

MozDevNet. "Express tutorial part 3: Using a database (with mongoose)" Retrieved 25. March 2024, from [https://developer.mozilla.org/en-US/docs/Learn/Server-side/Express\\_Nodejs/mongoose](https://developer.mozilla.org/en-US/docs/Learn/Server-side/Express_Nodejs/mongoose)

MozDevNet. "Express tutorial part 4: Routes and controllers" Retrieved 25. March 2024, from [https://developer.mozilla.org/en-US/docs/Learn/Server-side/Express\\_Nodejs/routes](https://developer.mozilla.org/en-US/docs/Learn/Server-side/Express_Nodejs/routes)

Unity Technologies. "Unity Documentation version 2022.3 Scripting API: UnityWebRequest" Retrieved 25. March 2024, from <https://docs.unity3d.com/ScriptReference/Networking.UnityWebRequest.html>

Pix2pix: Image-to-image translation with a conditional Gan : Tensorflow Core. (n.d.). Retrieved 25. March 2024, from <https://www.tensorflow.org/tutorials/generative/pix2pix>

Microsoft. (n.d.). Microsoft/Soundscape: An IOS application/service that AIDS navigation through spatialized audio. Retrieved 25. March 2024, from <https://github.com/microsoft/soundscape>