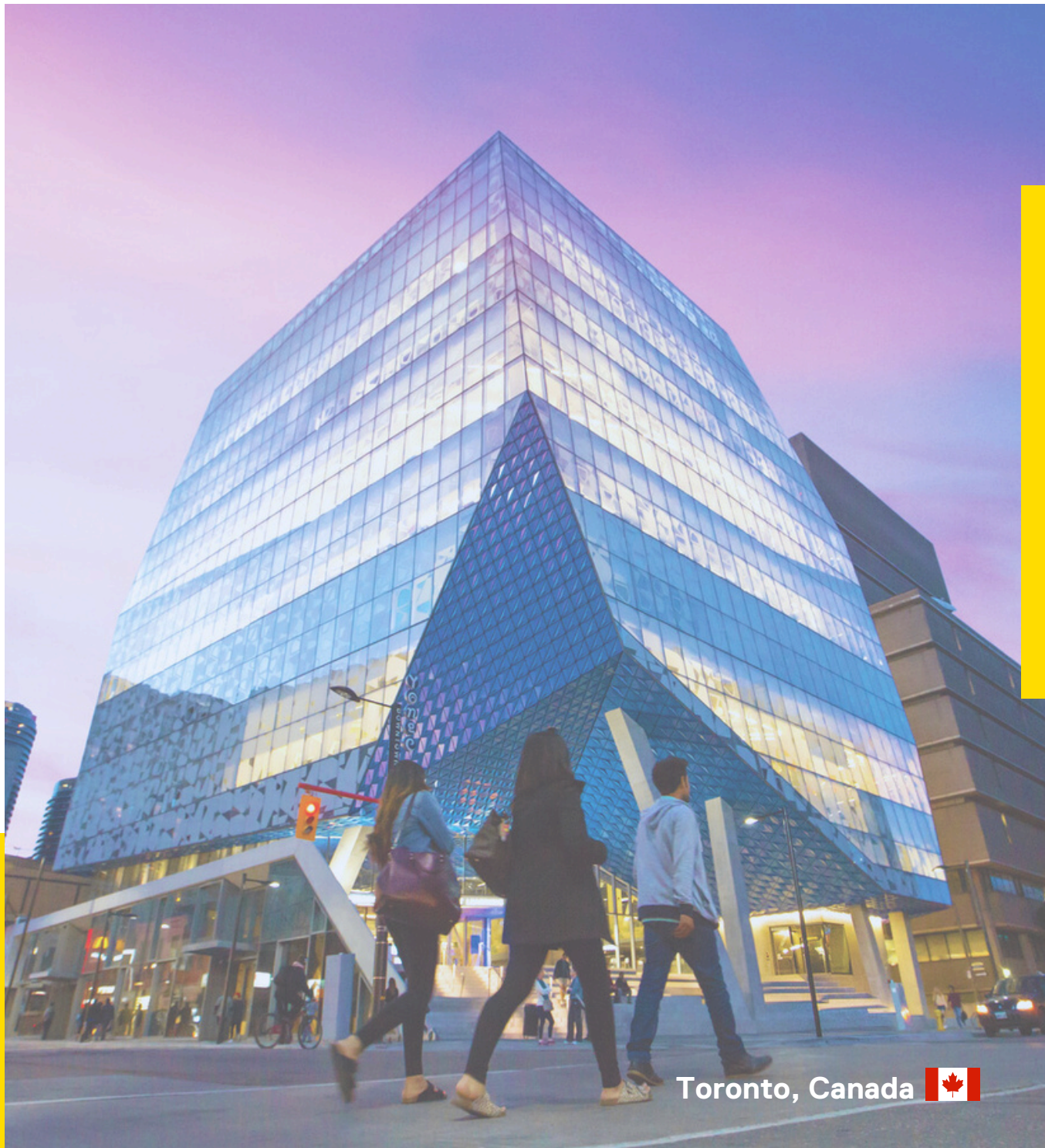


TMU Inbound Exchange Program Guide 2024/25



LOCATED IN ONE OF THE WORLD'S MOST MULTICULTURAL CITIES EXPERIENCE DIVERSITY



Located in the vibrant and exciting downtown core of Canada's largest city, Toronto Metropolitan University (TMU) is the country's leader in career-focused education and a university clearly on the move. With a distinct urban edge and a focus on innovation and entrepreneurship, Toronto Metropolitan University (TMU) has a mission to serve societal needs and a long-standing commitment to engaging its community.

Down the street from the CN Tower, the Eaton Centre, the Fashion and Financial districts as well as multiple ethnic neighborhoods, TMU's faculty and students all benefit from the breathtaking, bustling environment that is Toronto. Among other souvenirs of Canada, you will return home with an in-depth understanding of what makes this multicultural, economically competitive and artistically vibrant city and nation the envy of the world.

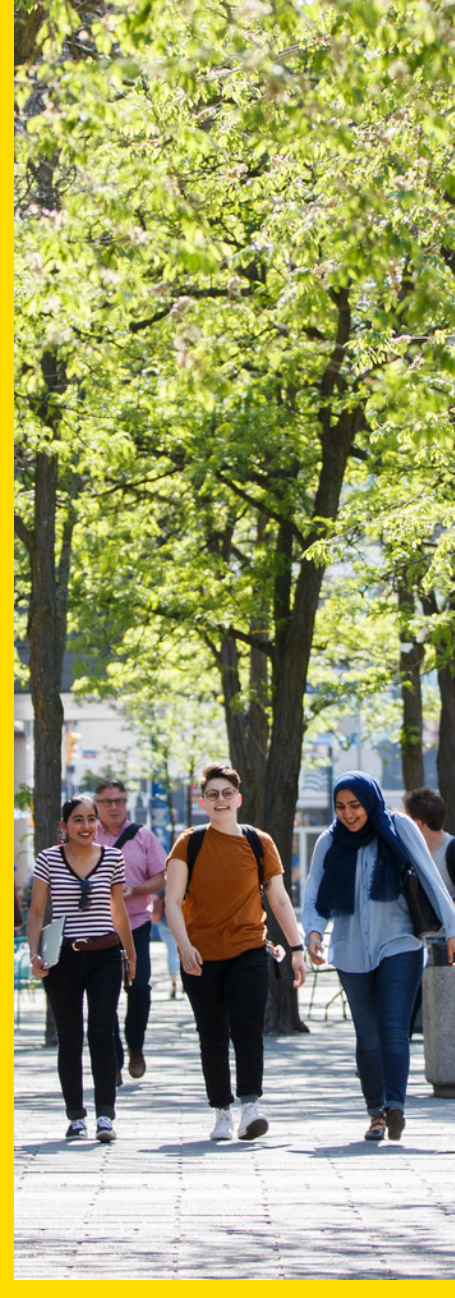
EXCHANGE

Exchange students are nominated via their home institution's international office. You can participate in either one or two terms at Toronto Metropolitan University and typically enroll in three to five courses per term. The credits earned at Toronto Metropolitan University can then be transferred back to your home university and applied toward their degree requirements.

AM I ELIGIBLE?

To participate in an exchange at Toronto Metropolitan University you must:

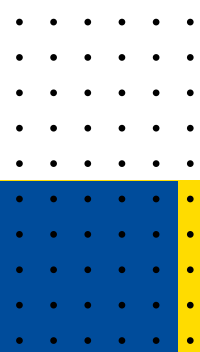
- Be currently registered at an institution that has an exchange agreement with Toronto Metropolitan University
- Have completed at least one academic year with a full course load at your home university
- Be able to conduct written and group work in English.
- Have a minimum grade point average (GPA) of 2.5 or 70% equivalent



	FALL SEMESTER	WINTER SEMESTER
Orientation (Mandatory)	Last week of August	Second week of January
Semester Dates	Early September - Early December	Mid-January - Late April
Final Exam	First two weeks of December	Last two weeks of April

* **Note:** During the exam dates, please be mindful **NOT to book your flights for the week before or during the exam period.**

More significant dates can be found at the [Academic Calendar](http://www.torontomu.ca/calendar/2024-2025/dates/):
www.torontomu.ca/calendar/2024-2025/dates/



LANGUAGE REQUIREMENTS

Minimum English proficiency guidelines are the same as the requirements for our [Undergraduate Admissions](#). Please see the [English Language Requirements](#) page for specific scores for **CAEL, Cambridge Assessment English, Duolingo English Test, IELTS, PTE, TOEFL**.

We use these results as guidelines, and you are not required to provide TMU with their proof of English proficiency. However, responsibility remains with your home university to ensure that the students who are nominated for exchange at Toronto Metropolitan University have a sufficient level of English proficiency.

LEARNING AGREEMENTS & COURSES

Exchange students are required to take a minimum of 4 courses and a maximum of 6 (depending on the academic program). You must select a TMU undergraduate program and choose courses offered through that program when completing the Study Plan. You should choose 8 to 10 courses per semester to allow for flexibility during the enrollment process, as course conflicts may arise, others may fill up quickly, or some may not be offered every semester.

Your Faculty's exchange coordinator at TMU will guide you through the enrolment process; students do not enroll in courses on their own. For a course list, see the [Academic Calendar](#). All courses are conducted in English.



HOW MUCH WILL THIS COST?

ACCOMMODATION

You are responsible for arranging your own accommodation. Exchange students staying for the Fall & Winter semesters or the Winter semester may apply to the on-campus residences. However, please note there are many more applicants than spaces available. There are also several nonTMU-affiliated residences near campus, as well as many private apartments for rent. In any case, you should search and apply for housing well in advance of their arrival in Toronto to ensure you find convenient and affordable accommodations.

HEALTH INSURANCE

International exchange students in the province of Ontario are legally required to purchase the University Health Insurance Plan (UHIP). Exchange students at TMU are automatically enrolled in UHIP upon arrival on campus. The cost of UHIP coverage will be included in your tuition when you enroll in courses at TMU. For more information, please see: <https://www.torontomu.ca/international/student-support/health/>

COST OF LIVING

Budgets may vary according to student's lifestyle, accommodation and other necessities:

LIVING COSTS	\$ IN CANADIAN
Rent	\$1000-\$2000/month
New textbooks	\$50-\$200/book
Groceries	\$350-\$650/month
Average Lunch	\$8-\$20/meal
Mobile Phone	\$35-\$120/month
Public Transit	\$35-\$120/month
Health Insurance	\$252/term
TOTAL	\$1,550-3,200/month

FACULTIES ACCEPTING INBOUND EXCHANGE STUDENTS



TED ROGERS SCHOOL OF MANAGEMENT

Located in the heart of Toronto's business community, the Ted Rogers School of Management combines academic rigour with real-world learning. Ted Rogers School of Management also gained AACSB accreditation in 2011, marking it as one of the top business schools on an international scale.

FACULTY OF ENGINEERING AND ARCHITECTURAL SCIENCE

The Faculty of Engineering and Architectural Science (FEAS) is a powerhouse of leading-edge applied research and education located in the heart of downtown Toronto. Delivering high-quality education that produces workforce-ready graduates and conducting vital research that improves the quality of lives around the globe, FEAS continues to be a growing and innovative part of Toronto Metropolitan University.



FACULTY OF ARTS

The Faculty of Arts programs combine a liberal arts education with something unique: TMU's brand of relevant, practical learning that is designed to make you a well-rounded, informed human being who is also highly employable.

THE CREATIVE SCHOOL

Attracting some of the most talented students country-wide, The Creative School offers highly sought-after programs in media, design, and fine arts. The program offers are unique in Canada and have been identified as top in their field both nationally and internationally.



FACULTY OF COMMUNITY SERVICES

Toronto Metropolitan University's Faculty of Community Services offers a diversity of disciplines that focus on making a positive impact in the community. The program supports a rich curriculum of multidisciplinary programs in health, education, social justice and community development.

FACULTY OF SCIENCE

Welcome to Toronto Metropolitan University's Faculty of Science. Since our inception, we've stayed nimble in designing research and academic programs to meet the latest needs of our complex and ever-changing world. Explore our offerings, and come join us in leading scientific understanding to new levels.



PARTICIPATING ACADEMIC UNITS WITHIN EACH FACULTY

FACULTY OF ARTS

- Arts and Contemporary Studies
- Criminology
- English
- Environment and Urban Sustainability
- Geographic Analysis
- History
- International Economics and Finance
- Language and Intercultural Relations
- Philosophy
- Politics and Governance
- Psychology
- Sociology

FACULTY OF SCIENCE

- Biology
- Biomedical Sciences
- Chemistry
- Computer Science
- Financial Mathematics
- Mathematics and its Applications
- Medical Physics

THE CREATIVE SCHOOL

- Creative Industries
- Fashion
- Graphic Communications Management
- Image Arts: Film Studies
- Image Arts: Photography Studies
- Interior Design
- Journalism
- Media Production
- New Media
- Performance: Acting
- Performance: Dance
- Performance: Production
- Professional Communication
- Professional Music
- Sport Media

FACULTY OF ENGINEERING AND ARCHITECTURAL SCIENCE

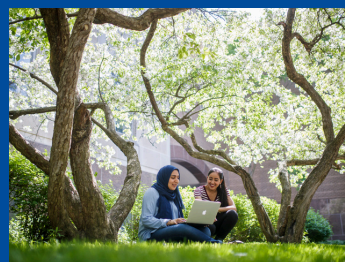
- Architectural Science

FACULTY OF COMMUNITY SERVICES

- Child and Youth Care
- Early Childhood Studies
- Social Work
- Nutrition and Food
- Urban and Regional Planning

TED ROGERS SCHOOL OF MANAGEMENT

- Accounting & Finance
- Business Management
 - Marketing
 - Entrepreneurship
 - Human Resources
 - Law and Business
 - Economics and Management Science
 - Global Management
 - Real Estate Management
- Business Technology Management
- Hospitality and Tourism Management
- Retail Management



CONTACT EXCHANGE COORDINATORS

Faculty	Contact Details
Faculty of Community Services (FCS)/ Faculty of Engineering & Architecture Science (FEAS) (* Note: Currently, FEAS only accepts Architecture students for inbound exchange. <u>Engineering students are not eligible</u> at this time)	Ashley Ruffin global.learning@torontomu.ca
Faculty of Arts (FOA)	Jill Careless 416-979-5000 x4798 jill.careless@torontomu.ca
The Creative School	Aamina Mohamed-Edoo 416-979-5000 x544365 exchange@torontomu.ca
Faculty of Science (FOS)	Salwa Saeed 416-979-5000 x3248 salwa.saeed@torontomu.ca
Ted Rogers School of Management (TRSM)	Kristy Holzworth 416-979-5000 x556725 trsmexchange@torontomu.ca

CONTACT TMU GLOBAL LEARNING

Visit us: 1 Dundas Street West 11th Floor Toronto, Ontario, Canada M5G 1Z3	Contact Us: Email: global.learning@torontomu.ca Instagram: @tmuglobal
---	---

For more information, please visit:
<https://www.torontomu.ca/global-learning/incoming/exchange-students/>

**Connect
with us.**

